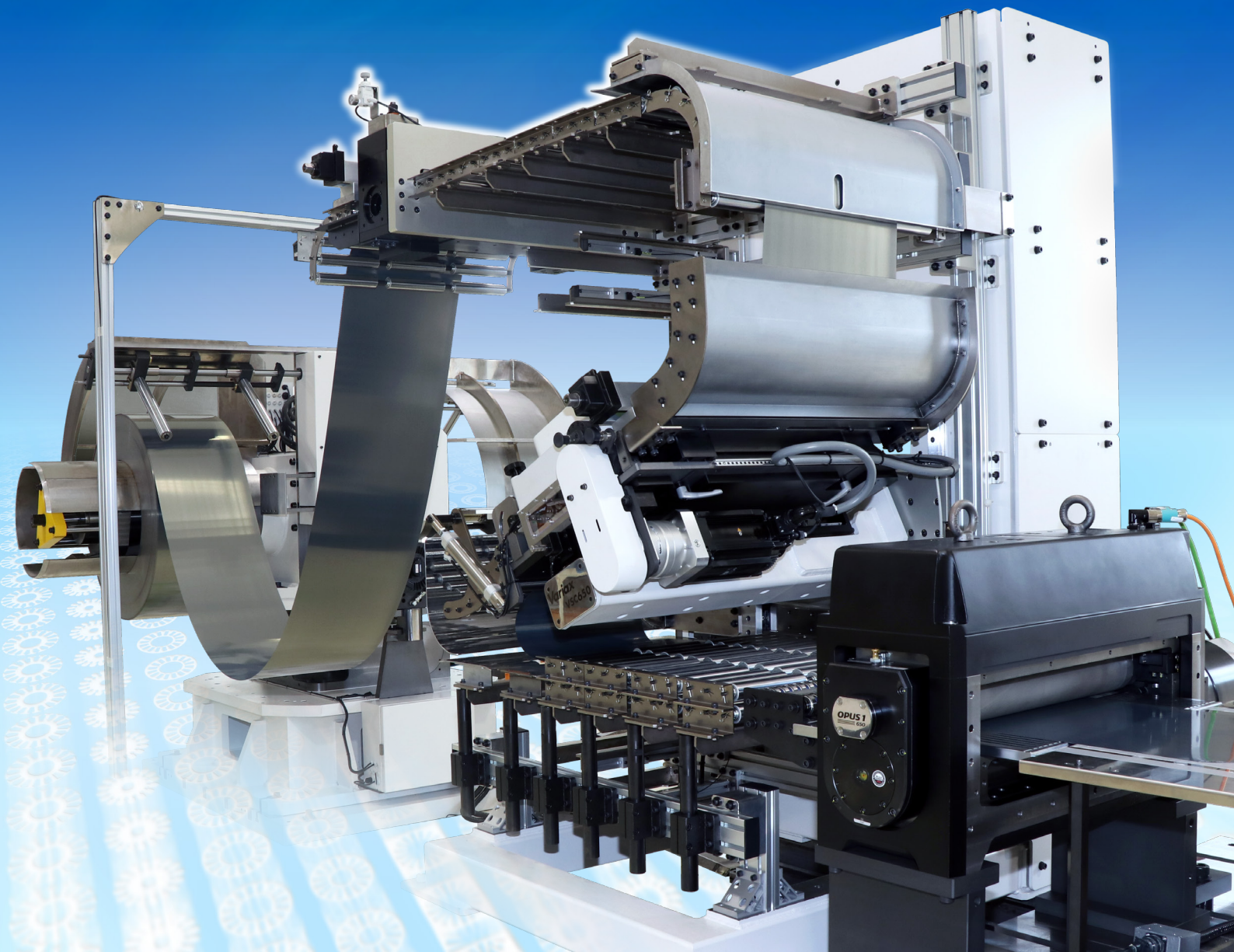


**PRECISION ADJUSTABLE FEED**

# **Variax**

With automatic threading function  
**Motor Core Stamping Line**





# With automatic threading function Motor Core Stamping Line



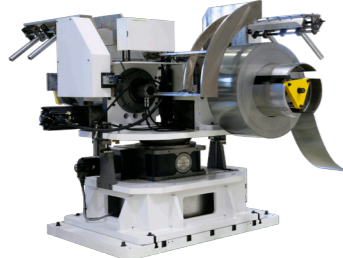
## Realizing Greater Speed and Efficiency on Press Lines

Maximum line speed of 120 m/min (300 mm × 400 spm)

This is a high-speed stamping line targeting the production of rotating motor cores for automobiles for which there is a growing need. Line lengths from uncoilers to scrap cutters in tandem press lines exceed 20 m, and our stamping lines will realize automated threading, management of settings on every machine, and high-speed feeding of materials. Using motion control technology honed over the years, Sankyo Seisakusho offers solutions for optimized line systems to meet customer needs for labor saving, improved productivity, etc.

### Line components

#### Uncoiler/VUC

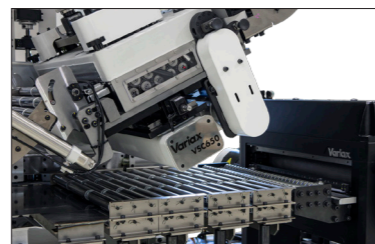


Uncoiler that starts and stop with the operation of the press, including press hot starts.

#### Machine specifications

Material Width (mm)	150 to 650
Material Thickness (mm)	max 0.5
Max. Feeding Speed (m/min)	120
Material mass (kg)	5,000 × 2

#### Loop controller with a leveler/VSC



A compact "Z-loop" loop controller with a leveler, indispensable for high-speed feeding of thin plate materials, and a tandem loop controller.

Material Width (mm)	150 to 650
Material Thickness (mm)	0.15 to 0.5
Max. Strokes (min <sup>-1</sup> )	1,000
Max. Feeding Speed (m/min)	120

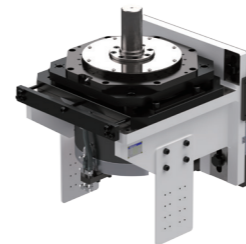
#### Feeder/OPUS1



High-performance servo feeder for upper and lower roll drive with IoT compatibility.

Material Width (mm)	max 650
Material Thickness (mm)	max 2
Max. Strokes (min <sup>-1</sup> )	1,000
Max. Feeding Speed (m/min)	100 or more

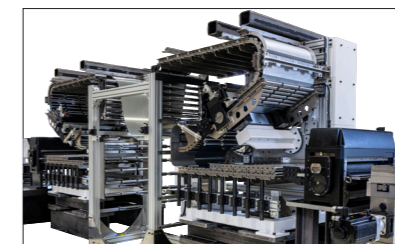
#### Core rotation unit/EVR1



An indexing/skewing drive system for rotating motor cores to assist layer by layer buildup, block buildup, and skew buildup.

Capacity (kW)	max 65
Load Inertia (kg·m <sup>2</sup> )	max 1.5
Max. Strokes (min <sup>-1</sup> )	1,000
Core rotation unit patterns	Layer by layer, block, and skew lamination

#### Tandem loop controller/VLC



A loop controller that allows a compact tandem press line layout.

Material Width (mm)	150 to 650
Material Thickness (mm)	0.15 to 0.5
Max. Strokes (min <sup>-1</sup> )	1,000
Max. Feeding Speed (m/min)	120

#### Material cutter (Scrap cutter)/SCR



A scrap cutter that offers stable high-speed cutting of thin skeleton materials and can be installed close to a feeder.

Material Width (mm)	max 650
Material Thickness (mm)	0.15 to 0.5
Max. Strokes (min <sup>-1</sup> )	500
Cutting load (N)	80,000



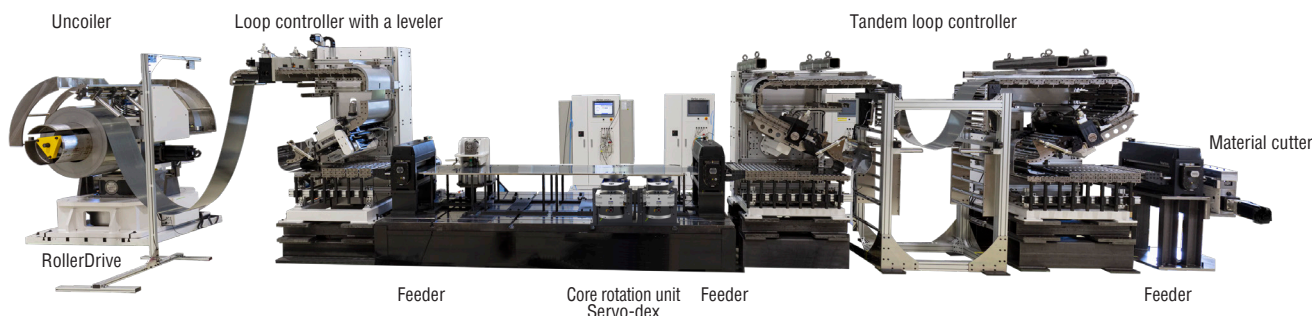
# Sankyo Seisakusho (Shizuoka): Motor core stamping line

Line specifications ●Total length: 20 m ●Line speed: 120 m/min (300 mm × 400 spm)

Material specifications ●Electrical steel: t 0.25 mm × w650 mm



See a video of the motor core stamping line.



## Other press material feeders



### V Series

- Cam roll feed developed for ultra-high speed and precision.
- Handles stamping of thick plates for, e.g., chains and motor cores.



### VG Series

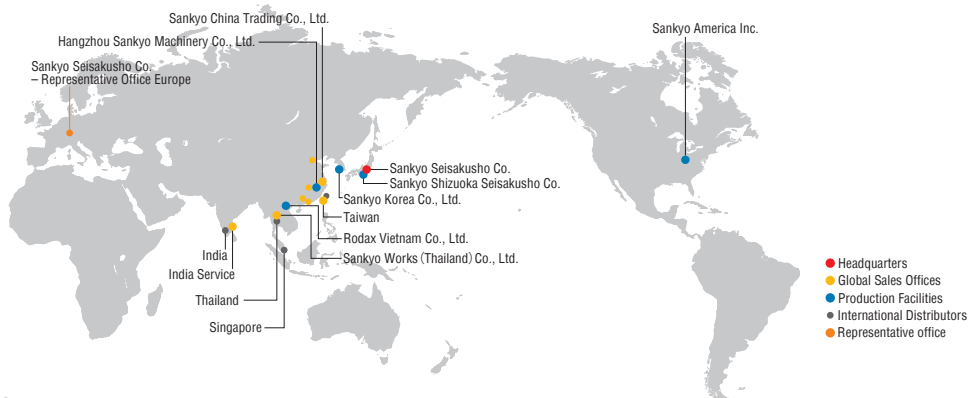
- Standard gripper models. A wide selection of sizes allowing the choosing of models to meet feeding requirements.
- Handles connectors, lead frames, terminals and beverage cans.



### VGX Series

- Comprehensive adjustment functions (digital display function for material thickness and release position).
- Improved handling of materials with different shapes and secondary processing (movable upper and lower grippers).

## Global network



## Group Companies

### Sankyo America Inc.

10655 State Route 47 Sidney, Ohio, 45365 U.S.A.  
Phone: +1-(0)937-498-4901 Fax: +1-(0)937-498-9403  
Email: sales@sankyoautomation.com

### Sankyo China Trading Co., Ltd.

[Shanghai Sales Office]  
Room101, Unit 2, No.159 Tianzhou Road, Shanghai 200233, China  
Phone: +86-(0)21-5445-2813 Fax: +86-(0)21-5445-2340  
Email: sales@sankyochina-trading.com

### [Shenzhen Sales Office]

Unit 19j, Tower B, Neo Building, No.6009 Shennan Avenue, Futian District, Shenzhen China  
Phone: +86-(0)755-8230-0270 Fax: +86-(0)755-8236-4605

### [Tianjin Sales Office]

Room 1905, Pengzhanfeiwo Building A, Crossing Yale Road Yaolin Road, Xiqing District, Tianjin 300380 China  
Phone: +86-(0)22-2312-1005 Fax: +86-(0)22-2312-1007

### Sankyo Korea Co., Ltd.

1449-48 Seobu-ro, Gwonseon-gu, Suwon-si, Gyeonggi-do, 16643 Korea  
Phone: +82-(0)31-895-5991 Fax: +82-(0)31-895-6607  
Email: kr-sales@rollerdrive.com

### [Guangzhou Sales Office]

Room 913, Xing Pu Building, No.12 Guan Hong Road, Guangzhou Economic Development Zone, Huang Pu, Guang Zhou 510670 China  
Phone: +86-(0)20-8985-1846 Fax: +86-(0)20-8225-7346

### [Wuhan Sales Office]

Room 2301, Taihe Square, No.134 Wusheng Road, Wuhan, Hubei Province China  
Phone: +86-(0)27-8568-5818 Fax: +86-(0)27-8568-2818

### Hangzhou Sankyo Machinery Co., Ltd.

No.2518 Jiang Dong 2 Road, Hangzhou Jiang Dong Industrial Park, Xiaoshan Zone, Hangzhou, Zhejiang, China  
Phone: +86-(0)571-8283-3311 Fax: +86-(0)571-8283-1133

### Rodax Vietnam Co., Ltd.

Plot No. M1, Thang Long Industrial Park II Di Su, My Hao, Hung Yen, Viet Nam  
Phone: +84-(0)221-3-589701 Fax: +84-(0)221-3-589708

### Sankyo Works (Thailand) Co., Ltd.

9/31 Moo 5, Phaholyotin Road, Klongnueng, Klong Luang, Patumthani 12120 Thailand  
Phone: +66-(0)2-516-5355 Fax: +66-(0)2-068-0931  
Email: sales@sankyo-works.co.th

### Sankyo Seisakusho Co. - Representative Office Europe

Flughafenstraße 59, 70629 Stuttgart Germany  
Phone: +49 (711) 490 52 -170  
Email: o.heinlin@sankyoeurope.com  
URL: https://www.sankyoeurope.com

### India: Variax Agent Galaxy Techniques

5/78A, K.N. Palayam, Pogalur, Annur, Coimbatore 641 697  
Phone: +91-(0)98430-48930  
Email: info@galaxytechniques.com  
URL: http://www.galaxytechniques.com

## Contact us

Mon-Fri AM8:30-12:00 PM13:00-17:30 UTC +09:00 (JST) (Except public holidays and company holidays)



<https://www.sankyo-seisakusho.co.jp>

### Headquarters (International Sales Division)

3-37-3 Tabatashinmachi, Kita-ku, Tokyo, Japan 114-8538  
Phone: +81-(0)3-3800-3305 Fax: +81-(0)3-3800-3378  
Email: overseas@sankyo-seisakusho.co.jp  
URL: https://www.sankyo-seisakusho.co.jp

### Taiwan Sales Office

No.21, Ln.152, Jianxing Rd., Sanhe Vil., Daya Dist., Taichung City 42876, Taiwan (R.O.C.)  
Phone: +886-(0)4-2359-4048 Fax: +886-(0)4-2359-4720  
Email: tw-sales@rollerdrive.com

\* No part of this brochure may be reproduced, transferred, or distributed without the express consent of Sankyo Seisakusho Co.  
\* Specifications and dimensions are subject to change without notice. Consult Sankyo sales before ordering.  
\* "Variax" is a registered trademark of Sankyo Seisakusho Co. in Japan.