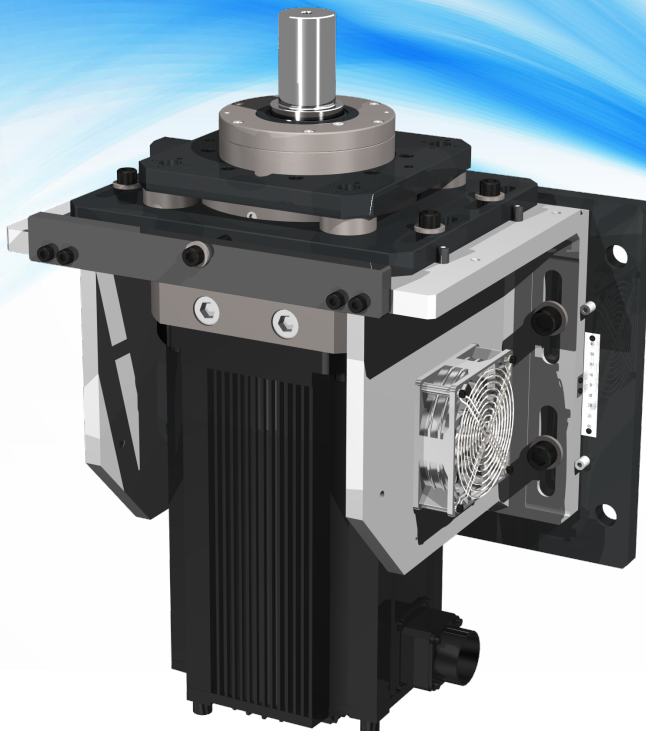


An indexing/skewing drive system for rotating the motor cores used for electric motors in home electrical appliances.

# ***Servo-dex EVR2 Series***

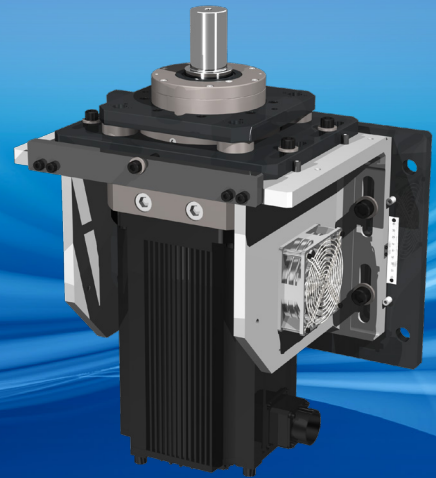


An indexing/skewing drive system for rotating the motor cores used for electric motors in home electrical appliances.

# Servo-dex EVR2 Series

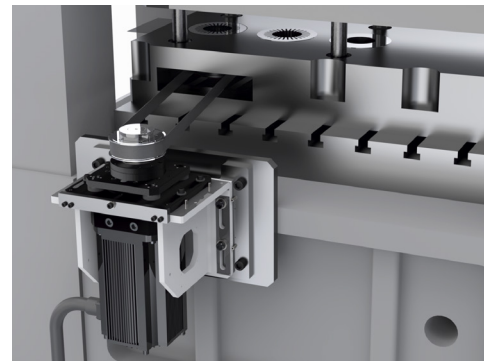
The Servo-dex EVR2 series is an indexing/skewing drive system for rotating the electric motor cores used in home appliances. It is optimal for electric motor core production press lines that make motors for home appliances, such as air conditioners and small motors for automobiles.

It reduces mold maintenance by suppressing vibration when stopping a workpiece with high-precision positioning. This series can easily be controlled using a timing signal, and various control patterns are now also available.



## Features

- Supports optional stacking angle settings and various types of control patterns
- Stacking operation triggered by the timing signal
- Its high precision positioning increases mold life.
- The combination of a servo driven feeder and a servodex device results in maximum motor core line optimization



## Specification table

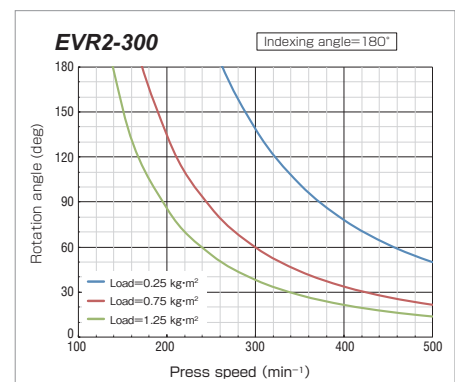
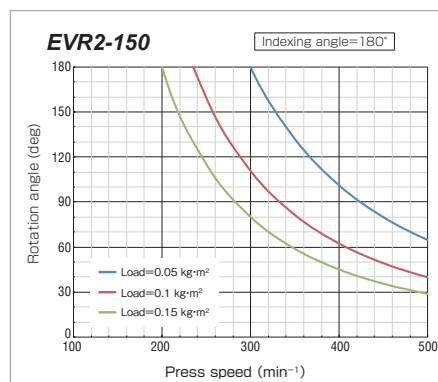
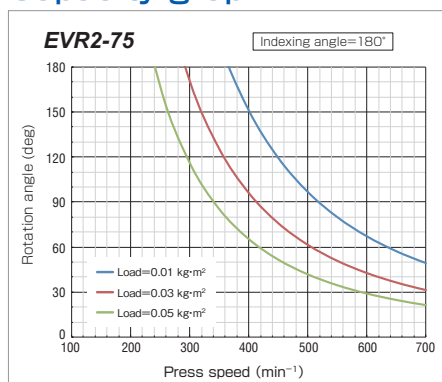
Item	Unit	EVR2-75	EVR2-150	EVR2-300
Rated torque	N·m	48	95	358
Maximum torque	N·m	119	224	752
Rated rpm	rpm	1500	1500	800
Load inertia(max) <sup>※2</sup>	kg·m <sup>2</sup>	0.05	0.15	1.25
Indexing angle	deg		Any angle	
Permitted axial load	deg		Any angle	
Permitted axial load <sup>※3</sup>	N		100	
Permitted radial load <sup>※4</sup> ※5	N	2,000	3,000	4,000
Motor capacity	Kw	7.5	15	30
Product weight	kg	128	217	450

※1 Indicates the accuracy of a single unit. It does not include the residual vibration that occurs when using a timing belt.

※2 The capacity changes, depending on the speed ratio and the load being handled. ※3 Represents the weight of the load.

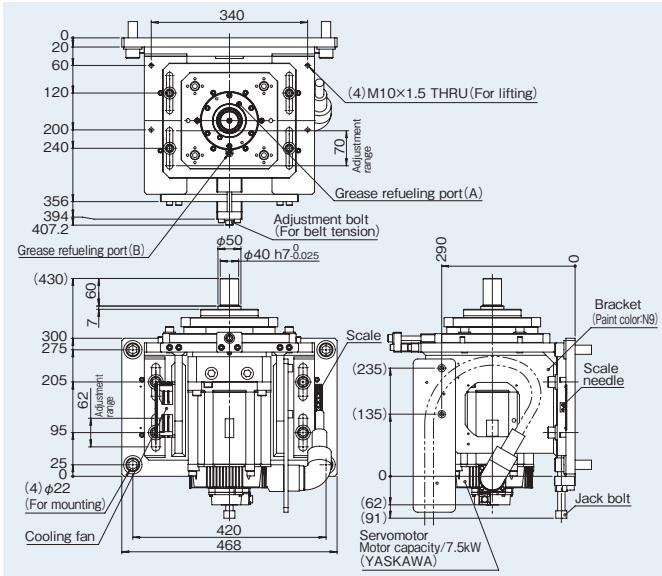
※4 Represents the load applied to the center height of the output shaft. ※5 Use a timing belt that has a low elastic deformation to suppress residual vibration.

## Capacity graph



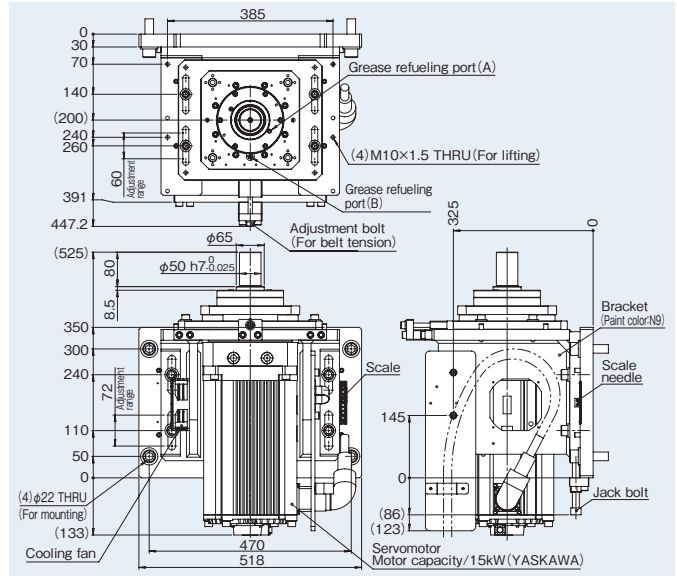
# Dimensional drawing

## EVR2-75

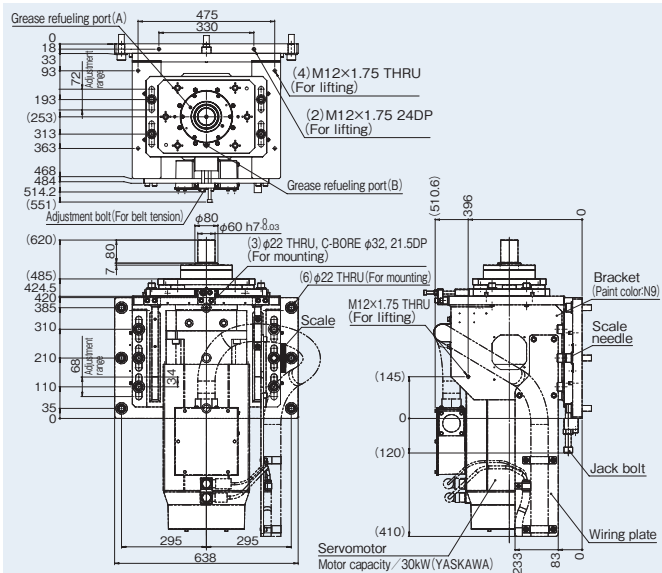


## EVR2-150

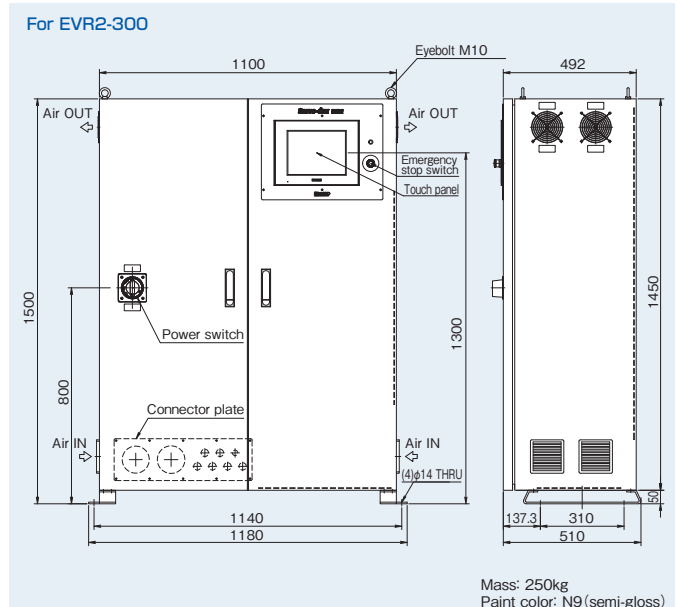
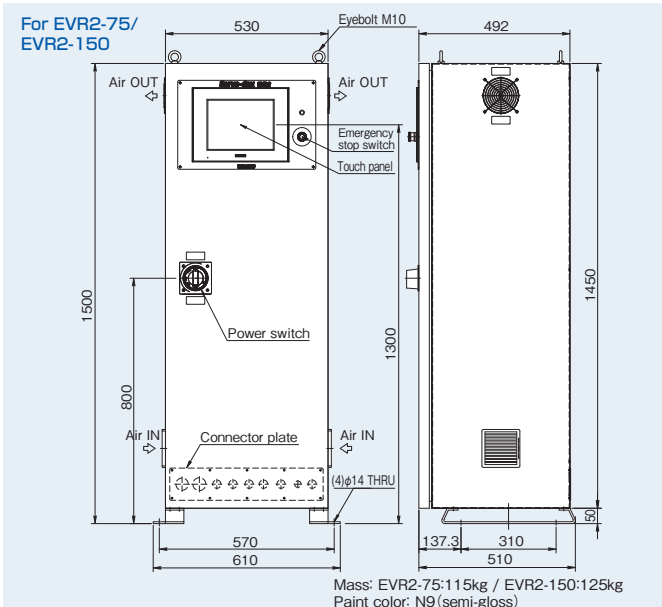
[Unit:mm]

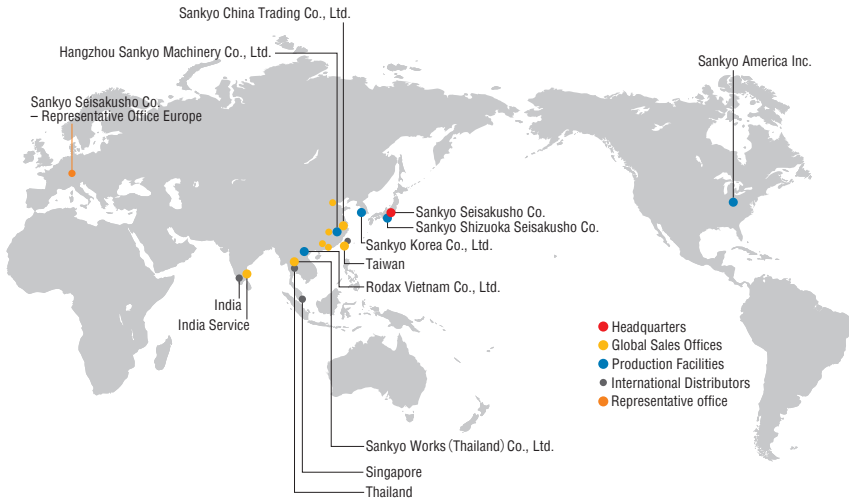


## EVR2-300



## Control panel





## Group Companies

**Sankyo America Inc.**  
 10655 State Route 47 Sidney, Ohio, 45365 U.S.A.  
 Phone: +1-(0)937-498-4901 Fax: +1-(0)937-498-9403  
 Email: sales@sankyoautomation.com

**Sankyo Korea Co., Ltd.**  
 1449-48 Seobu-ro, Gwonseon-gu, Suwon-si, Gyeonggi-do, 16643 Korea  
 Phone: +82-(0)31-895-5991 Fax: +82-(0)31-895-6607  
 Email: kr-sales@rollerdrive.com

**Sankyo China Trading Co., Ltd.**  
 [Shanghai Sales Office]  
 Room 101, Unit 2, No.159 Tianzhou Road, Shanghai 200233, China  
 Phone: +86-(0)21-5445-2813 Fax: +86-(0)21-5445-2340  
 Email: sales@sankyo-china-trading.com

[Shenzhen Sales Office]  
 Unit 19j, Tower B, Neo Building, No.6009 Shennan Avenue, Futian District, Shenzhen China  
 Phone: +86-(0)755-8230-0270 Fax: +86-(0)755-8236-4605

[Tianjin Sales Office]  
 Room 1905, Pengzhanfeiwu Building A, Crossing Yale Road Yaolin Road, Xiqing District, Tianjin 300380 China  
 Phone: +86-(0)22-2312-1005 Fax: +86-(0)22-2312-1007

[Guangzhou Sales Office]  
 Room 913, Xing Pu Building, No.12 Guan Hong Road, Guangzhou Economic Development Zone, Huang Pu, Guang Zhou 510670 China  
 Phone: +86-(0)20-8985-1846 Fax: +86-(0)20-8225-7346

[Wuhan Sales Office]  
 Room 2301, Taihe Square, No.134 Wusheng Road, Wuhan, Hubei Province China  
 Phone: +86-(0)27-8568-5818 Fax: +86-(0)27-8568-2818

**Hangzhou Sankyo Machinery Co., Ltd.**  
 No.2518 Jiang Dong 2 Road, Hangzhou Jiang Dong Industrial Park, Xiaoshan Zone, Hangzhou, Zhejiang, China  
 Phone: +86-(0)571-8283-3311 Fax: +86-(0)571-8283-1133

**Rodax Vietnam Co., Ltd.**  
 Plot No. M1, Thang Long Industrial Park li Di Su, My Hao, Hung Yen, Viet Nam  
 Phone: +84-(0)221-3-589701 Fax: +84-(0)221-3-589708

**Sankyo Works (Thailand) Co., Ltd.**  
 9/31 Moo 5, Phaholyotin Road, Klongnueng, Klong Luang, Patumthani 12120 Thailand  
 Phone: +66-(0)2-516-5355 Fax: +66-(0)2-068-0931  
 Email: sales@sankyo-works.co.th

**Sankyo Seisakusho Co. - Representative Office Europe**  
 Flughafenstraße 59, 70629 Stuttgart Germany  
 Phone: +49 (711) 490 52 -170  
 Email: o.heinlin@sankyo-europe.com  
 URL: <https://www.sankyo-europe.com>

■ **India: Variax Agent Galaxy Techniques**  
 5/78A, K.N. Palayam, Pogalur, Annur, Coimbatore 641 697  
 Phone: +91-(0)98430-48930  
 Email: info@galaxytechniques.com  
 URL: <http://www.galaxytechniques.com>

## Contact us

Mon–Fri AM8:30–12:00 PM13:00–17:30 UTC + 09:00 (JST) (Except public holidays and company holidays)

■ **Headquarters (International Sales Division)**  
 3-37-3 Tabatashinmachi, Kita-ku, Tokyo, Japan 114-8538  
 Phone: +81-(0)3-3800-3305  
 Fax: +81-(0)3-3800-3378  
 Email: [overseas@sankyo-seisakusho.co.jp](mailto:overseas@sankyo-seisakusho.co.jp)  
 URL: <https://www.sankyo-seisakusho.co.jp>

■ **Taiwan Sales Office**  
 No.21, Ln.152, Jianxing Rd., Sanhe Vil., Daya Dist., Taichung City 42876, Taiwan (R.O.C.)  
 Phone: +886-(0)4-2359-4048  
 Fax: +886-(0)4-2359-4720  
 Email: [tw-sales@rollerdrive.com](mailto:tw-sales@rollerdrive.com)



<https://www.sankyo-seisakusho.co.jp>

Specifications and dimensions are subject to change without notice.  
 Consult Sankyo sales before ordering.  
 Patent rights and copyrights for some mechanisms, trademarks, images,  
 drawings and other material in this catalog all belong to Sankyo Seisakusho Co.

