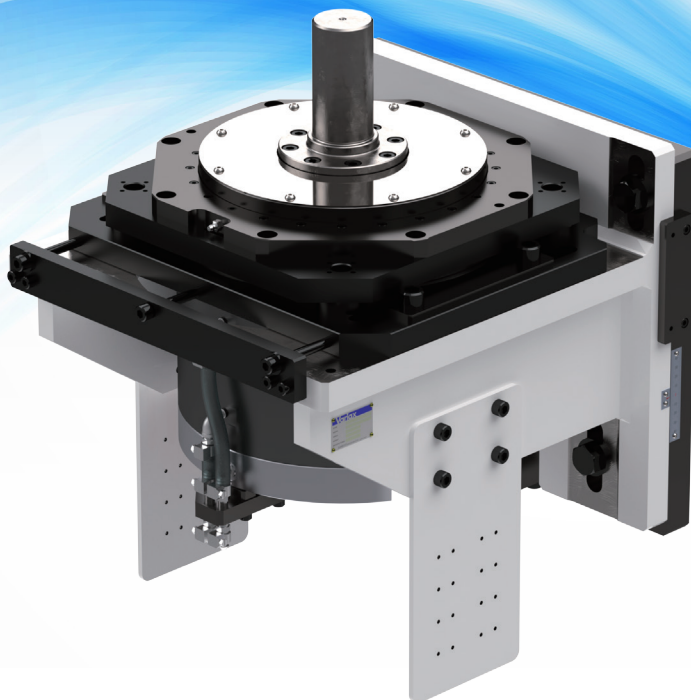


An indexing/skewing drive system for rotating the motor cores used for electric motors in automobiles.

# ***Servo-dex EVR1 Series***

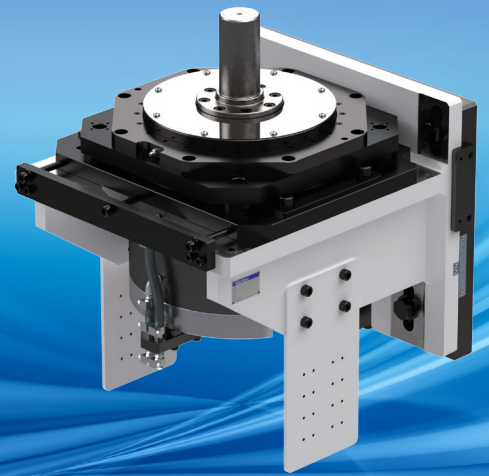


An indexing/skewing drive system for rotating the motor cores used for electric motors in automobiles.

# Servo-dex EVR1 Series

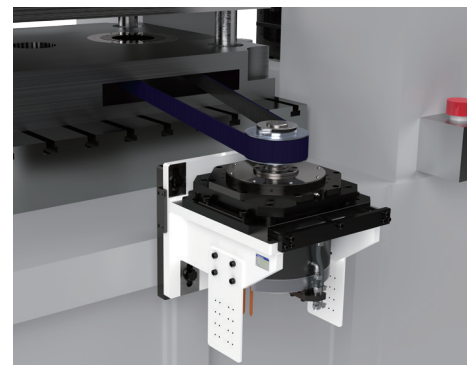
The Servo-dex EVR1 series is an indexing or skewing drive system for rotating the motor core for production lines making motor cores for hybrid, PHEV, and EV car motors. By connecting a high-performance servo motor directly to the motor core, it can index core stacks with high-speed and high-torque, while allowing you to set the rotation angle freely.

With fusion of a servo motor and a cam motion curve, high speed and a variety rotational stacking build-ups are possible. This contributes to improved productivity of high-quality motor cores.



## Features

- High-end model combining high speed, high precision and multiple functions
- It also supports arbitrary rotation angle settings, and skew processing of the motor core
- The communication function allows you to check the status of the operation from a remote location
- Its high precision positioning increases mold life.
- The combination of a servo driven feeder and a servodex device results in maximum motor core line optimization



## Specification table

Item	Unit	General specifications		High power specifications	
		EVR1-230R	EVR1-310R	EVR1-230U	EVR1-310U
Rated torque	N·m	173	238	453	792
Maximum torque	N·m	538	1300	643	1300
Rated rpm	rpm	798	777	823	777
Load inertia(max)*2	kg·m <sup>2</sup>	0.5	1.5	0.5	1.5
Indexing angle	deg	Any angle			
Layout angle	deg	Any angle			
Permitted axial load*3	N	100			
Permitted radial load*4 *5	N	2,000	4,400	2,000	4,400
Motor capacity	Kw	15	19	39	65
Operating air pressure*6	Mpa	0.4~0.5		-	
Required cooling air volume*7	L/min	220		-	
Maximum cooling capacity required	Kw	-		7.2	6.58
Cooling water volume required	L/min	-		12.1	19.5
Product weight	kg	233	260	233	260

\*1 Indicates the accuracy of a single unit. It does not include the residual vibration that occurs when using a timing belt.

\*2 The capacity changes, depending on the speed ratio and the load being handled. \*3 Represents the weight of the load.

\*4 Represents the load applied to the center height of the output shaft.

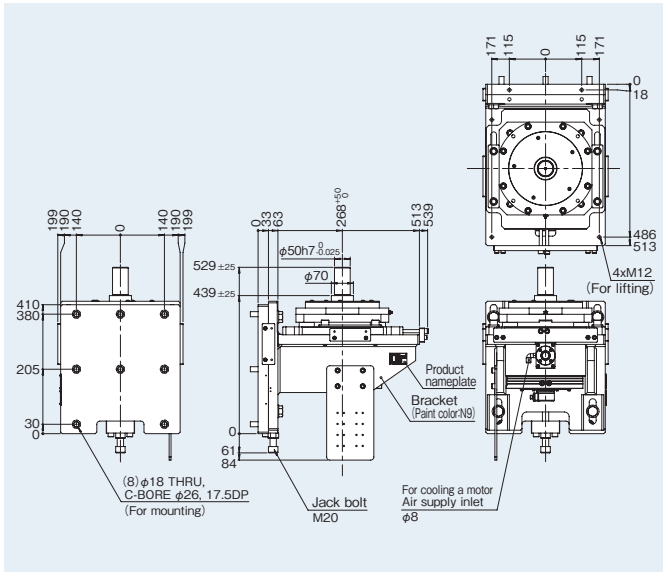
\*5 Use a timing belt that has a low elastic deformation to suppress residual vibration.

\*6 Used for cooling air. \*7 The capacity varies, depending on the amount of cooling air supplied.

Cooling air is supplied when the motor temperature reaches 60°C or higher.

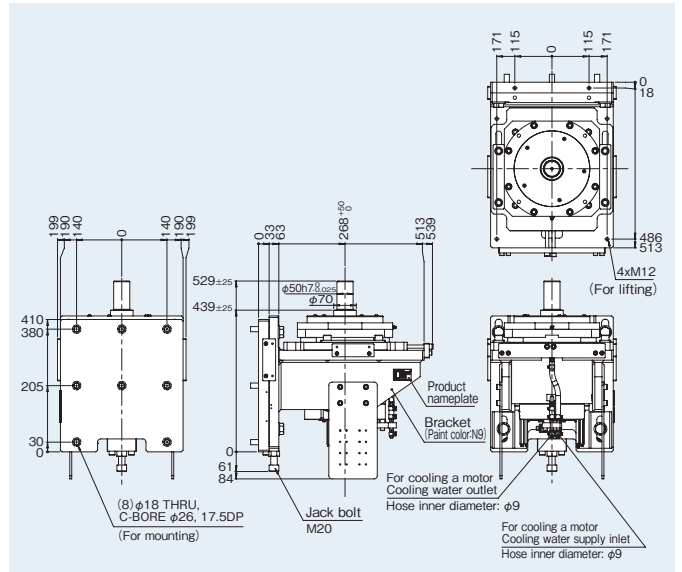
# Dimensional drawing

## EVR1-230R

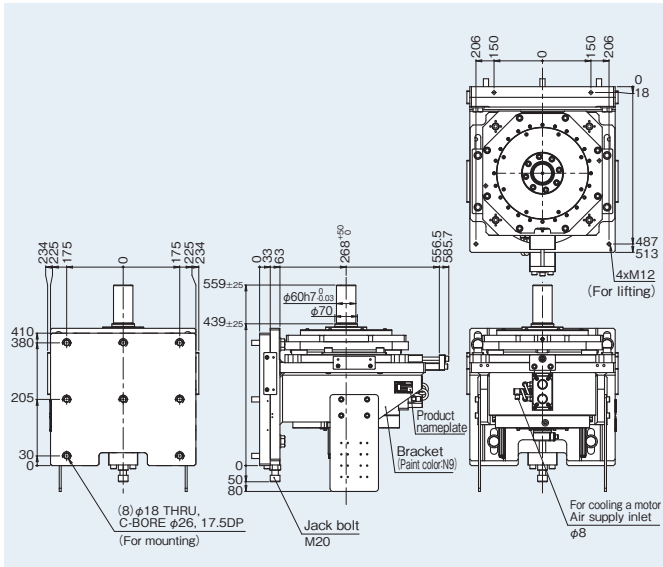


## EVR1-230U

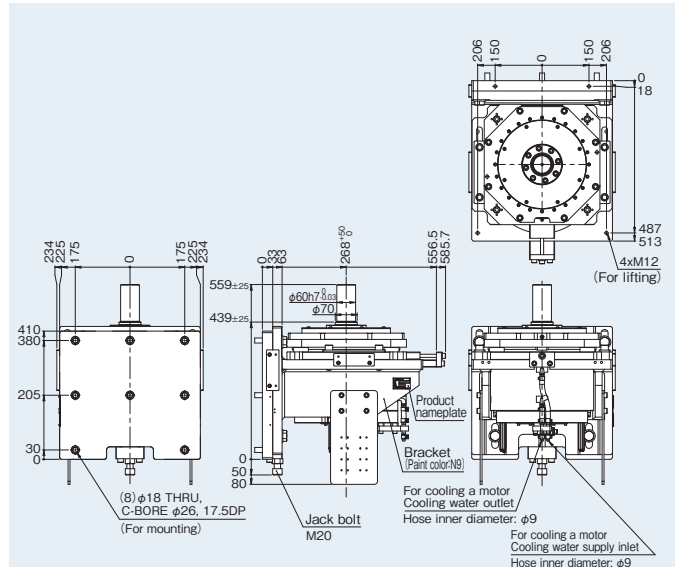
[Unit:mm]



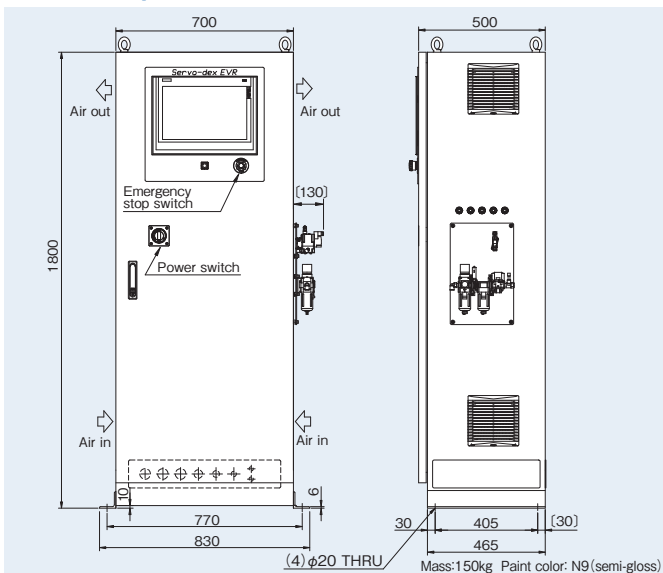
## EVR1-310R



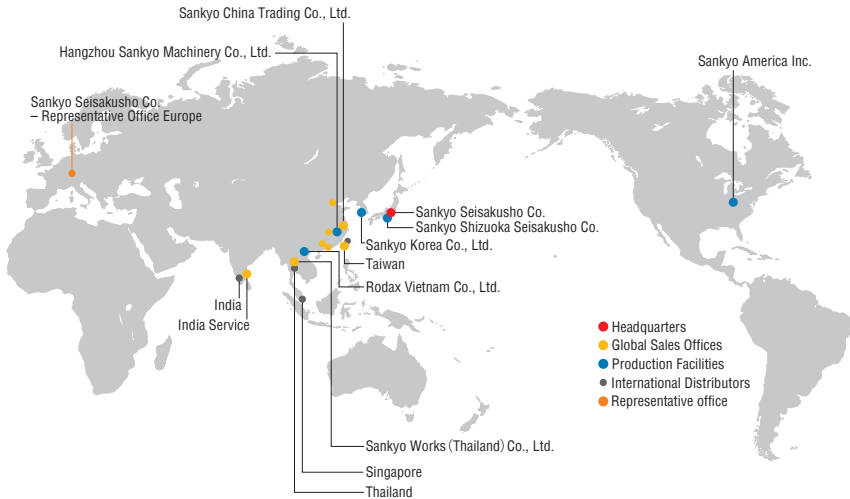
## EVR1-310U



## Control panel



\* The control panel size varies, depending on the motor size and type. Please check the product specifications for details.



## Group Companies

**Sankyo America Inc.**  
10655 State Route 47 Sidney, Ohio, 45365 U.S.A.  
Phone: +1-(0)937-498-4901 Fax: +1-(0)937-498-9403  
Email: sales@sankyoautomation.com

**Sankyo Korea Co., Ltd.**  
1449-48 Seobu-ro, Gwonseon-gu, Suwon-si, Gyeonggi-do, 16643 Korea  
Phone: +82-(0)31-895-5991 Fax: +82-(0)31-895-6607  
Email: kr-sales@rollerdrive.com

**Sankyo China Trading Co., Ltd.**  
[Shanghai Sales Office]  
Room 101, Unit 2, No.159 Tianzhou Road, Shanghai 200233, China  
Phone: +86-(0)21-5445-2813 Fax: +86-(0)21-5445-2340  
Email: sales@sankyochina-trading.com

[Shenzhen Sales Office]  
Unit 19j, Tower B, Neo Building, No.6009 Shennan Avenue, Futian District, Shenzhen China  
Phone: +86-(0)755-8230-0270 Fax: +86-(0)755-8236-4605

[Tianjin Sales Office]  
Room 1905, Pengzhanfeiwu Building A, Crossing Yale Road Yaolin Road, Xiqing District, Tianjin 300380 China  
Phone: +86-(0)22-2312-1005 Fax: +86-(0)22-2312-1007

[Guangzhou Sales Office]  
Room 913, Xing Pu Building, No.12 Guan Hong Road, Guangzhou Economic Development Zone, Huang Pu, Guang Zhou 510670 China  
Phone: +86-(0)20-8985-1846 Fax: +86-(0)20-8225-7346

[Wuhan Sales Office]  
Room 2301, Taihe Square, No.134 Wusheng Road, Wuhan, Hubei Province China  
Phone: +86-(0)27-8568-5818 Fax: +86-(0)27-8568-2818

**Hangzhou Sankyo Machinery Co., Ltd.**  
No.2518 Jiang Dong 2 Road, Hangzhou Jiang Dong Industrial Park, Xiaoshan Zone, Hangzhou, Zhejiang, China  
Phone: +86-(0)571-8283-3311 Fax: +86-(0)571-8283-1133

**Rodax Vietnam Co., Ltd.**  
Plot No. M1, Thang Long Industrial Park li Di Su, My Hao, Hung Yen, Viet Nam  
Phone: +84-(0)221-3-589701 Fax: +84-(0)221-3-589708

**Sankyo Works (Thailand) Co., Ltd.**  
9/31 Moo 5, Phaholyotin Road, Klongnueng, Klong Luang, Patumthani 12120 Thailand  
Phone: +66-(0)2-516-5355 Fax: +66-(0)2-068-0931  
Email: sales@sankyo-works.co.th

**Sankyo Seisakusho Co. - Representative Office Europe**  
Flughafenstraße 59, 70629 Stuttgart Germany  
Phone: +49 (711) 490 52 -170  
Email: o.heinlin@sankyo-europe.com  
URL: <https://www.sankyo-europe.com>

**India: Variax Agent Galaxy Techniques**  
5/78A, K.N. Palayam, Pogalur, Annur, Coimbatore 641 697  
Phone: +91-(0)98430-48930  
Email: info@galaxytechniques.com  
URL: <http://www.galaxytechniques.com>

## Contact us

Mon–Fri AM8:30–12:00 PM13:00–17:30 UTC + 09:00 (JST) (Except public holidays and company holidays)

■ **Headquarters (International Sales Division)**  
3-37-3 Tabatashinmachi, Kita-ku, Tokyo, Japan 114-8538  
Phone: +81-(0)3-3800-3305  
Fax: +81-(0)3-3800-3378  
Email: [overseas@sankyo-seisakusho.co.jp](mailto:overseas@sankyo-seisakusho.co.jp)  
URL: <https://www.sankyo-seisakusho.co.jp>

■ **Taiwan Sales Office**  
No.21, Ln.152, Jianxing Rd., Sanhe Vil., Daya Dist., Taichung City 42876, Taiwan (R.O.C.)  
Phone: +886-(0)4-2359-4048  
Fax: +886-(0)4-2359-4720  
Email: [tw-sales@rollerdrive.com](mailto:tw-sales@rollerdrive.com)



<https://www.sankyo-seisakusho.co.jp>

Specifications and dimensions are subject to change without notice.  
Consult Sankyo sales before ordering.  
Patent rights and copyrights for some mechanisms, trademarks, images, drawings and other material in this catalog all belong to Sankyo Seisakusho Co.