

P40/E40 Dimensions

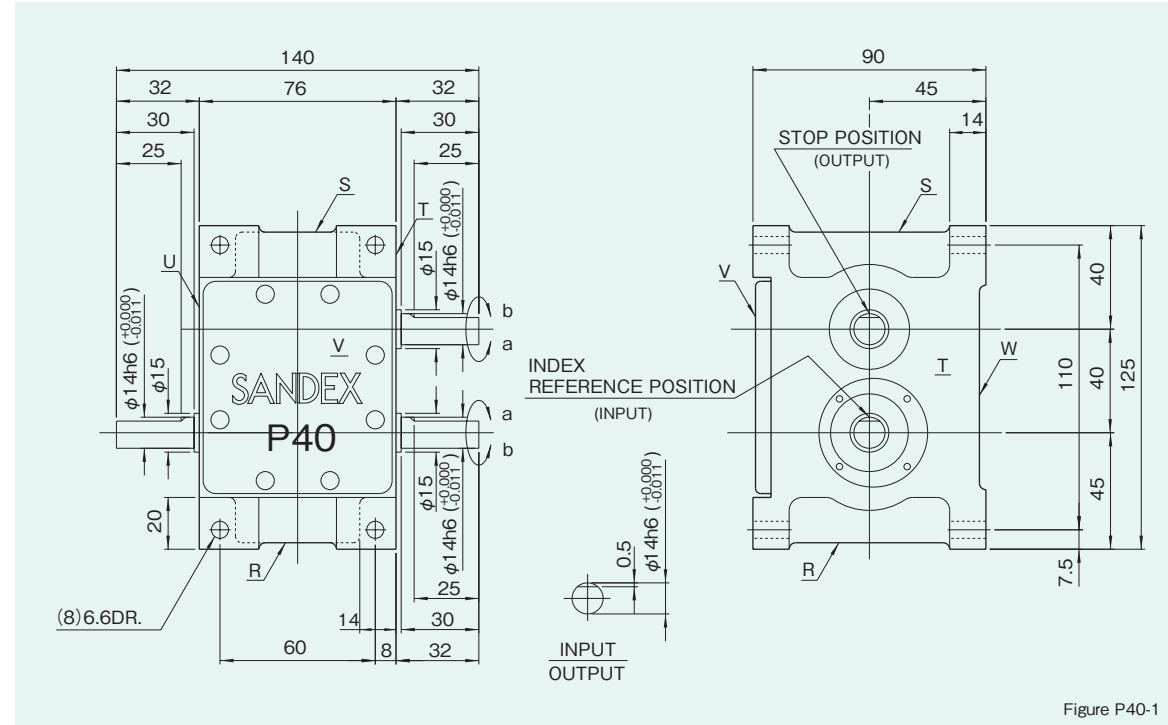
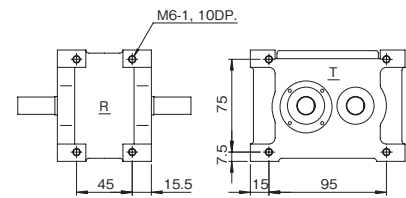


Figure P40-1

Mounting hole locations

Figure P40-2

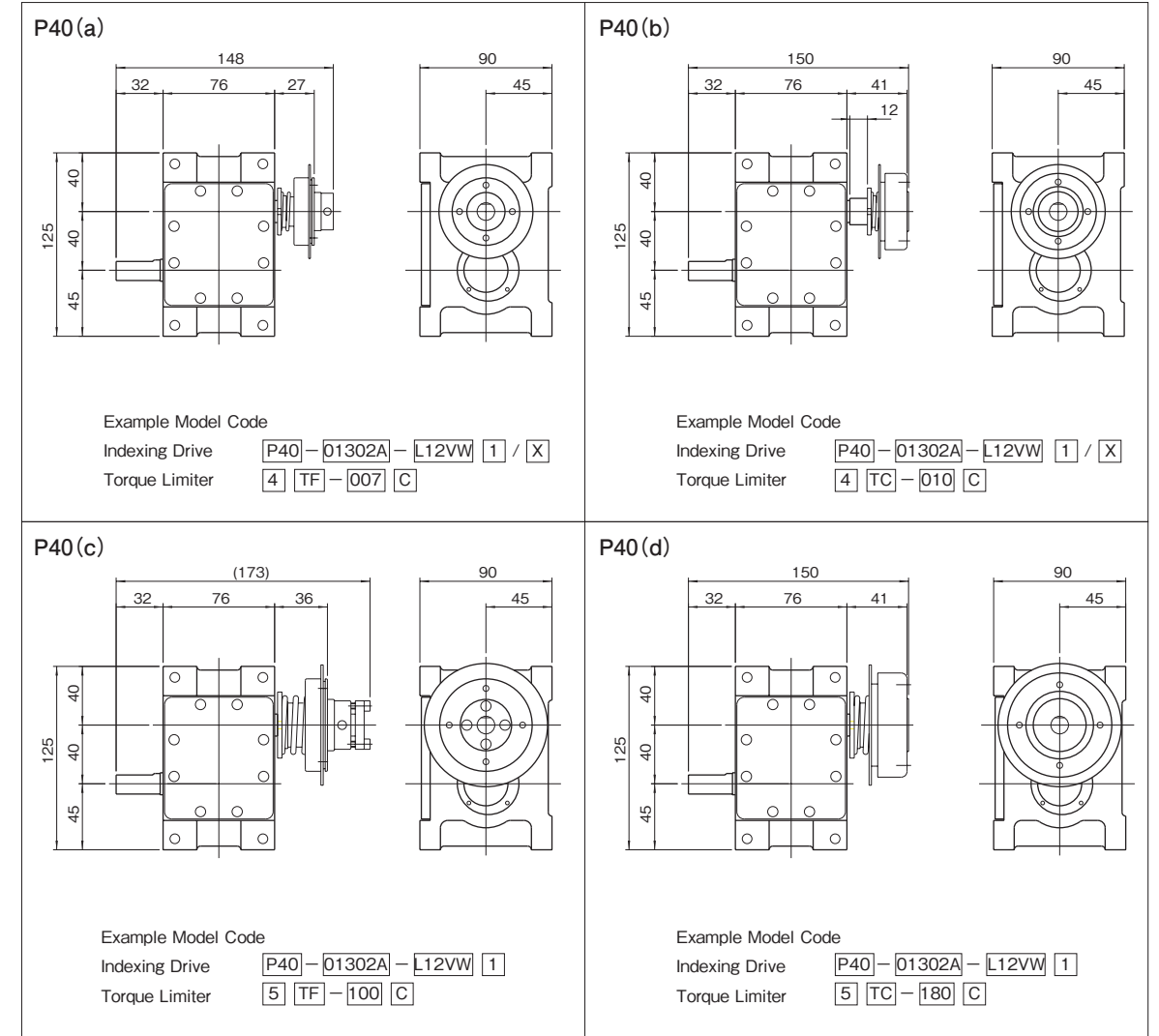


Dimension of R,S,T, and U surface

Precautions

- This indexing drive relies on grease lubrication.

Mounted accessories



Precautions

- Models P40 and E40 can be equipped with torque limiters 5TF and 5TC.
- Use of torque limiter models 4TF or 4TC requires a special order for a smaller output shaft (size φ12).

Specifications

Table P40-1

| Item                         | Symbol         | Unit              | Value                          | Item                                       | Symbol         | Unit              | Value                | Item                        | Symbol | Unit | Value |
|------------------------------|----------------|-------------------|--------------------------------|--|----------------|-------------------|----------------------|-----------------------------|--------|------|-------|
| Output allowable axial load  | P <sub>1</sub> | N                 | 637                            | Input allowable axial load                 | P <sub>4</sub> | N                 | 637                  | Indexing accuracy (1 DWELL) |        | sec  | ±90   |
| Output allowable radial load | P <sub>2</sub> | N                 | 490                            | Input maximum repetitious bending force    | P <sub>5</sub> | N                 | 490                  | Indexing accuracy (2 DWELL) |        | sec  | ±180  |
| Output static torque         | T <sub>s</sub> | N·m               | Refer to Torque Capacity Table | Input maximum repetitious allowable torque | P <sub>6</sub> | N·m               | 29.4                 | Repetitive accuracy         |        | sec  | 90    |
| Output torsional rigidity    | K <sub>1</sub> | N·m /rad          | 2.0×10 <sup>3</sup>            | Input torsional rigidity                   | K <sub>2</sub> | N·m /rad          | 2.0×10 <sup>3</sup>  | Product weight              |        | kg   | 3.5   |
| Output inertia               | J <sub>o</sub> | kg·m <sup>2</sup> | Refer to Torque Capacity Table | Input inertia                              | J <sub>1</sub> | kg·m <sup>2</sup> | 1.5×10 <sup>-4</sup> | Housing color               |        | Gray |       |

Note : Input inertia : J is calculated in dwell.

(1N=0.102kgf)

P50/E50 Dimensions

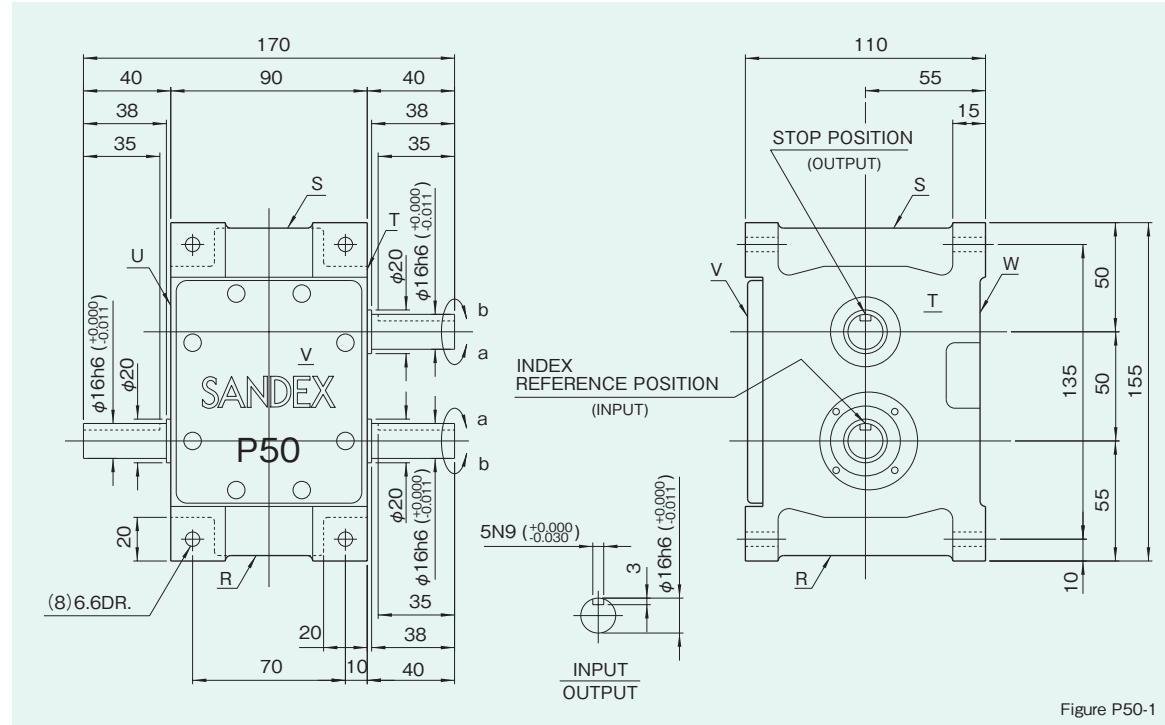
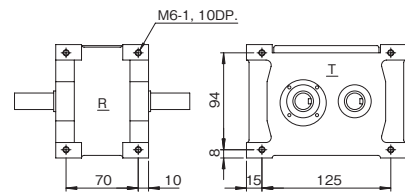


Figure P50-1

Mounting hole locations

Figure P50-2

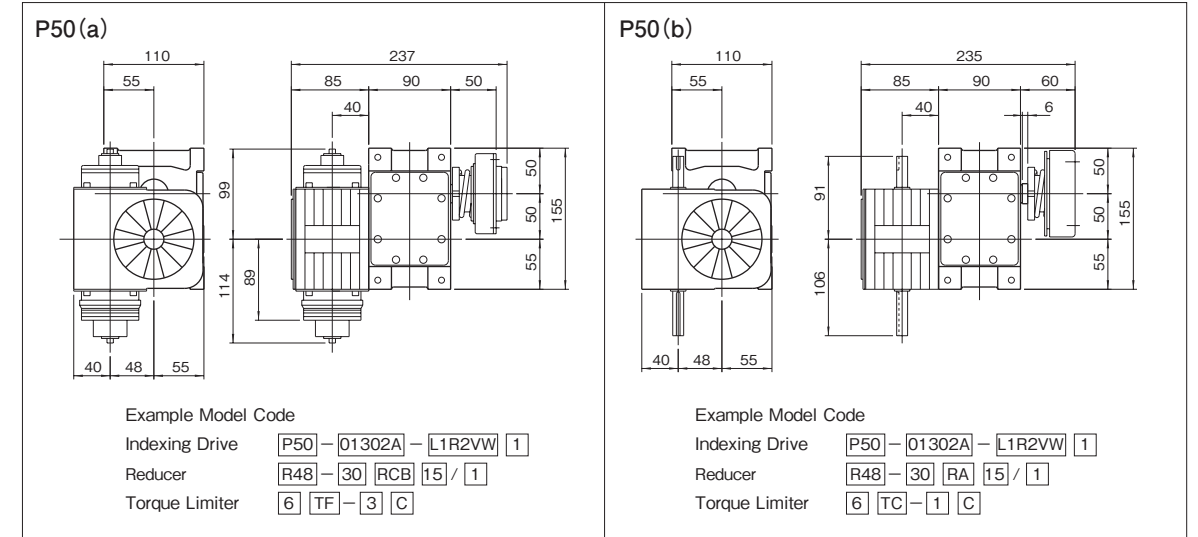


Dimension of R,S,T, and U surface

Precautions

- This indexing drive relies on grease lubrication.

Mounted accessories



Precautions

- Models P50 and E50 can be equipped with reducer R48.
- The reducer can be mounted in 16 different positions as shown on page B448.
- Models P50 and E50 can be equipped with torque limiters 6TF and 6TC.
- Torque limiters 6TC requires a shaft collar for mounting.

Specifications

Table P50-1

| Item                         | Symbol         | Unit              | Value                          | Item                                       | Symbol         | Unit              | Value                 | Item                        | Symbol | Unit | Value |
|------------------------------|----------------|-------------------|--------------------------------|--|----------------|-------------------|-----------------------|-----------------------------|--------|------|-------|
| Output allowable axial load  | P <sub>1</sub> | N                 | 1274                           | Input allowable axial load                 | P <sub>4</sub> | N                 | 1274                  | Indexing accuracy (1 DWELL) |        | sec  | ±72   |
| Output allowable radial load | P <sub>2</sub> | N                 | 980                            | Input maximum repetitious bending force    | P <sub>5</sub> | N                 | 980                   | Indexing accuracy (2 DWELL) |        | sec  | ±144  |
| Output static torque         | T <sub>s</sub> | N·m               | Refer to Torque Capacity Table | Input maximum repetitious allowable torque | P <sub>6</sub> | N·m               | 58.8                  | Repetitive accuracy         |        | sec  | 72    |
| Output torsional rigidity    | K <sub>1</sub> | N·m / rad         | 4.3×10 <sup>3</sup>            | Input torsional rigidity                   | K <sub>2</sub> | N·m / rad         | 4.3×10 <sup>3</sup>   | Product weight              |        | kg   | 7.5   |
| Output inertia               | J <sub>o</sub> | kg·m <sup>2</sup> | Refer to Torque Capacity Table | Input inertia                              | J <sub>1</sub> | kg·m <sup>2</sup> | 2.75×10 <sup>-4</sup> | Housing color               |        | Gray |       |

Note : Input inertia : J is calculated in dwell.

(1N=0.102kgf)

P65/E65 Dimensions

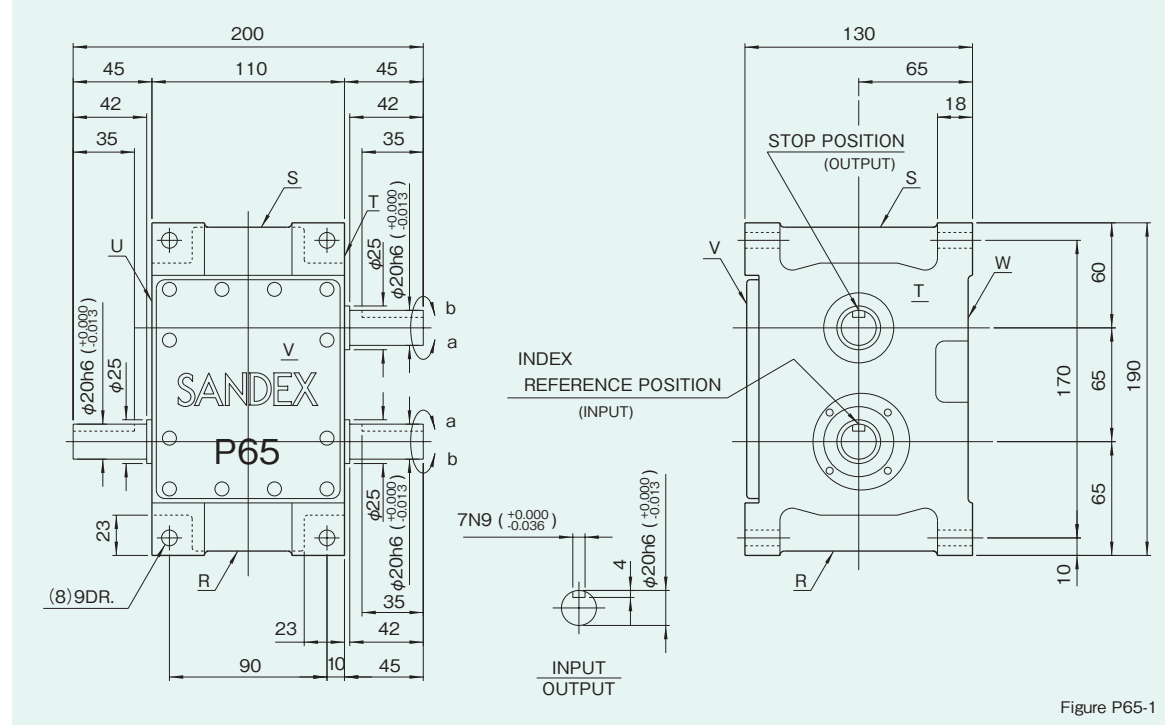
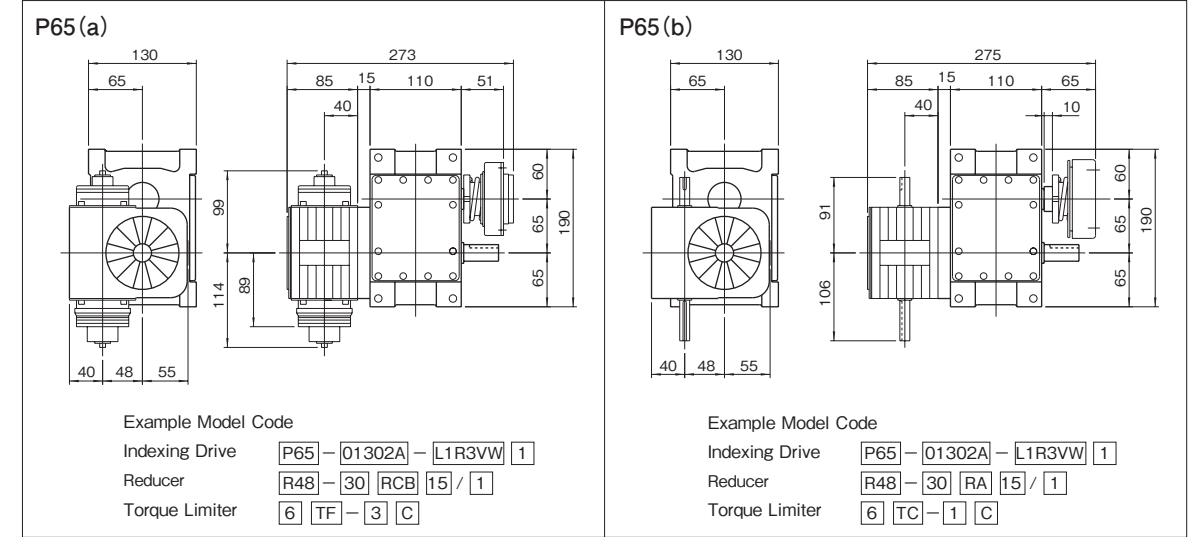


Figure P65-1

Mounted accessories



Precautions

- Models P65 and E65 can be equipped with reducer R48.
- The reducer can be mounted in 16 different positions as shown on page B448.
- Models P65 and E65 can be equipped with torque limiters 6TF and 6TC.
- Torque limiters 6TC requires a shaft collar for mounting.

Mounting hole locations

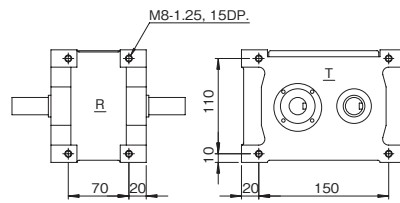


Figure P65-2

Dimension of R,S,T, and U surface

Locations of oil plug, etc., and oil capacity

Figure P65-3

| Mounting position | 1   | 3   | 4   | 5   | 6   |
|-------------------|-----|-----|-----|-----|-----|
| Location          |     |     |     |     |     |
| Oil capacity (ℓ)  | 0.4 | 0.4 | 0.4 | 0.4 | 0.4 |

Precautions

- Each point indicated in the mounting positions shown in Figure P65-3 represents (starting at top) the oil plug (PT1/8), oil level (PF3/8), and drain (PT1/8).
- The mounting positions correspond to code j for the indexing, oscillating drives.
- The oil levels indicated in Figure P65-3 are given in general figures and will differ according to the profile of the cam and the number of cam followers.

Specifications

Table P65-1

| Item                         | Symbol         | Unit              | Value                          | Item                                      | Symbol         | Unit              | Value                 | Item                        | Symbol | Unit | Value |
|------------------------------|----------------|-------------------|--------------------------------|---|----------------|-------------------|-----------------------|-----------------------------|--------|------|-------|
| Output allowable axial load  | P <sub>1</sub> | N                 | 2450                           | Input allowable axial load                | P <sub>4</sub> | N                 | 2450                  | Indexing accuracy (1 DWELL) |        | sec  | ±60   |
| Output allowable radial load | P <sub>2</sub> | N                 | 1568                           | Input maximum repetitive bending force    | P <sub>5</sub> | N                 | 1568                  | Indexing accuracy (2 DWELL) |        | sec  | ±120  |
| Output static torque         | T <sub>s</sub> | N·m               | Refer to Torque Capacity Table | Input maximum repetitive allowable torque | P <sub>6</sub> | N·m               | 107.8                 | Repetitive accuracy         |        | sec  | 60    |
| Output torsional rigidity    | K <sub>1</sub> | N·m / rad         | 9.0×10 <sup>3</sup>            | Input torsional rigidity                  | K <sub>2</sub> | N·m / rad         | 9.0×10 <sup>3</sup>   | Product weight              |        | kg   | 14    |
| Output inertia               | J <sub>0</sub> | kg·m <sup>2</sup> | Refer to Torque Capacity Table | Input inertia                             | J <sub>1</sub> | kg·m <sup>2</sup> | 8.25×10 <sup>-4</sup> | Housing color               |        | Gray |       |

Note : Input inertia : J is calculated in dwell.

(1N=0.102kgf)

P80/E80 Dimensions

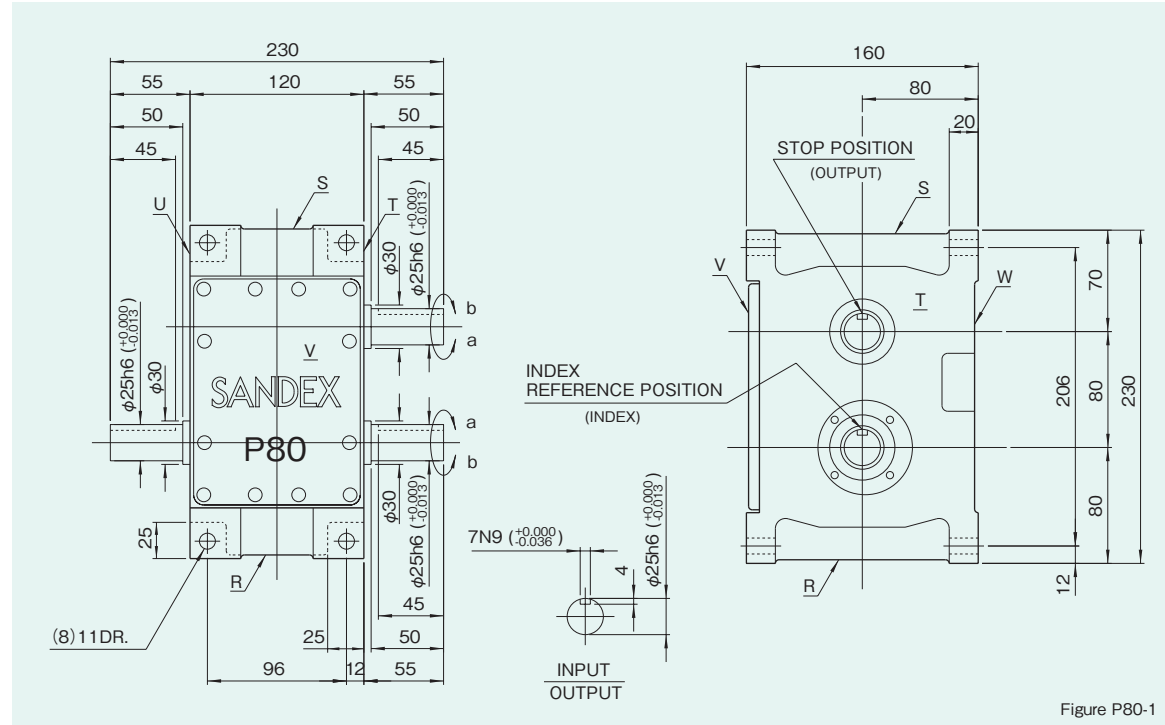


Figure P80-1

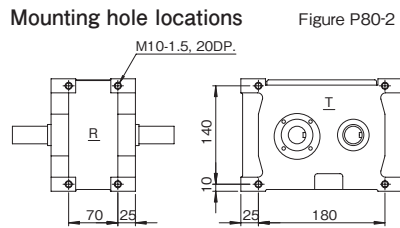


Figure P80-2

Dimension of R,S,T, and U surface

Locations of oil plug, etc., and oil capacity Figure P80-3

| Mounting position | 1   | 3   | 4   | 5   | 6   |
|-------------------|-----|-----|-----|-----|-----|
| Location          |     |     |     |     |     |
| Oil capacity (ℓ)  | 0.8 | 0.8 | 0.8 | 0.8 | 0.8 |

Precautions

- Each point indicated in the mounting positions shown in Figure P80-3 represents (starting at top) the oil plug (PT3/8), oil level (PF3/8), and drain (PT3/8).
- The mounting positions correspond to code j for the indexing, oscillating drives.
- The oil levels indicated in Figure P80-3 are given in general figures and will differ according to the profile of the cam and the number of cam followers.

Specifications

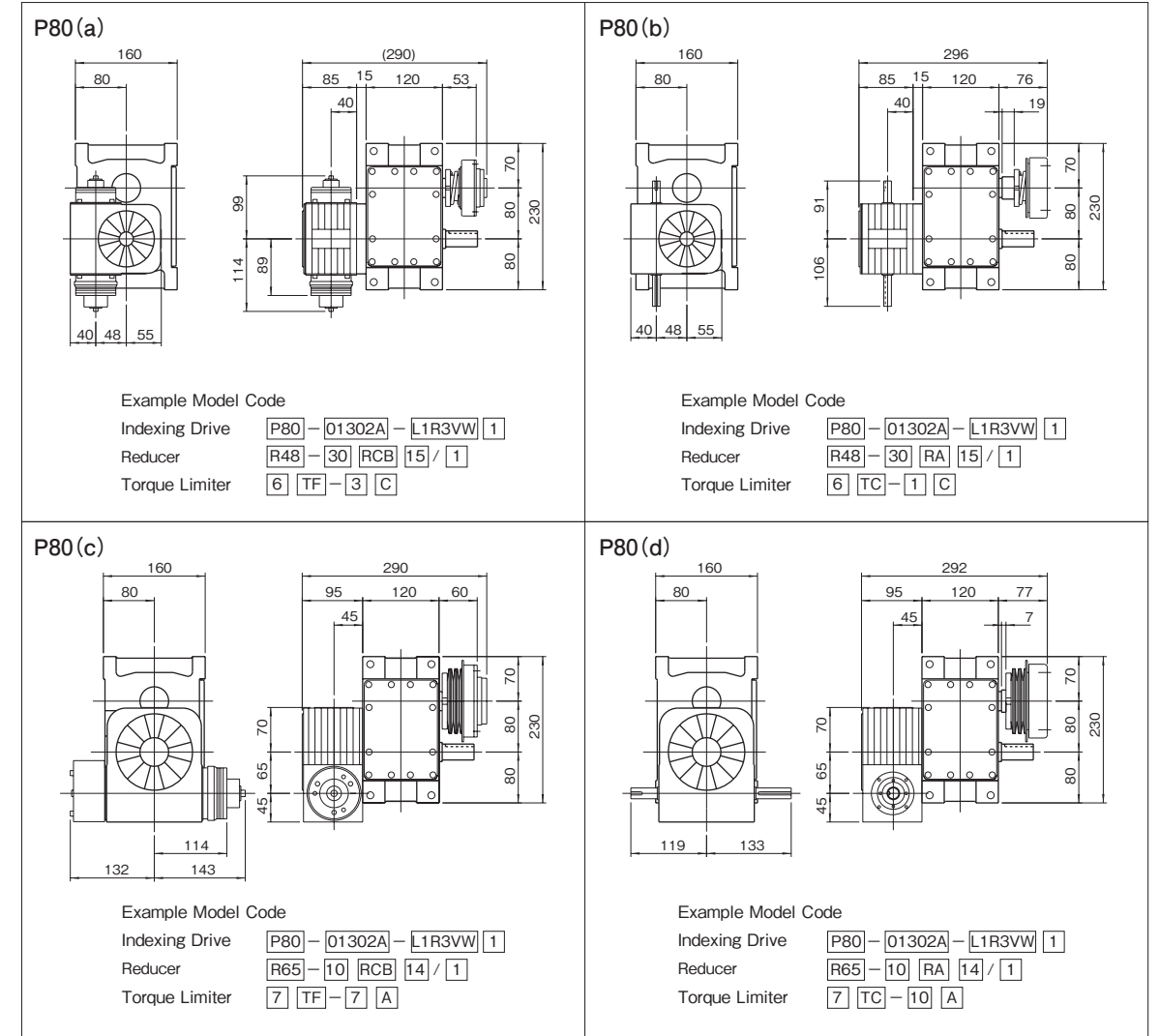
Table P80-1

| Item                         | Symbol         | Unit              | Value                          | Item                                      | Symbol         | Unit              | Value                 | Item                        | Symbol | Unit | Value |
|------------------------------|----------------|-------------------|--------------------------------|---|----------------|-------------------|-----------------------|-----------------------------|--------|------|-------|
| Output allowable axial load  | P <sub>1</sub> | N                 | 3528                           | Input allowable axial load                | P <sub>4</sub> | N                 | 3528                  | Indexing accuracy (1 DWELL) |        | sec  | ±60   |
| Output allowable radial load | P <sub>2</sub> | N                 | 2450                           | Input maximum repetitive bending force    | P <sub>5</sub> | N                 | 2450                  | Indexing accuracy (2 DWELL) |        | sec  | ±120  |
| Output static torque         | T <sub>s</sub> | N·m               | Refer to Torque Capacity Table | Input maximum repetitive allowable torque | P <sub>6</sub> | N·m               | 245                   | Repetitive accuracy         |        | sec  | 60    |
| Output torsional rigidity    | K <sub>1</sub> | N·m /rad          | 1.81×10 <sup>4</sup>           | Input torsional rigidity                  | K <sub>2</sub> | N·m /rad          | 1.81×10 <sup>4</sup>  | Product weight              |        | kg   | 20    |
| Output inertia               | J <sub>o</sub> | kg·m <sup>2</sup> | Refer to Torque Capacity Table | Input inertia                             | J <sub>1</sub> | kg·m <sup>2</sup> | 2.45×10 <sup>-3</sup> | Housing color               |        | Gray |       |

Note : Input inertia : J is calculated in dwell.

(1N=0.102kgf)

Mounted accessories



Precautions

- Models P80 and E80 can be equipped with reducers R48 and R65.
- The reducer can be mounted in 16 different positions as shown on page B448.
- Models P80 and E80 can be equipped with torque limiters 6TF, 6TC, 7TF and 7TC.
- TC type torque limiters require a shaft collar for mounting.

P100/E100 Dimensions

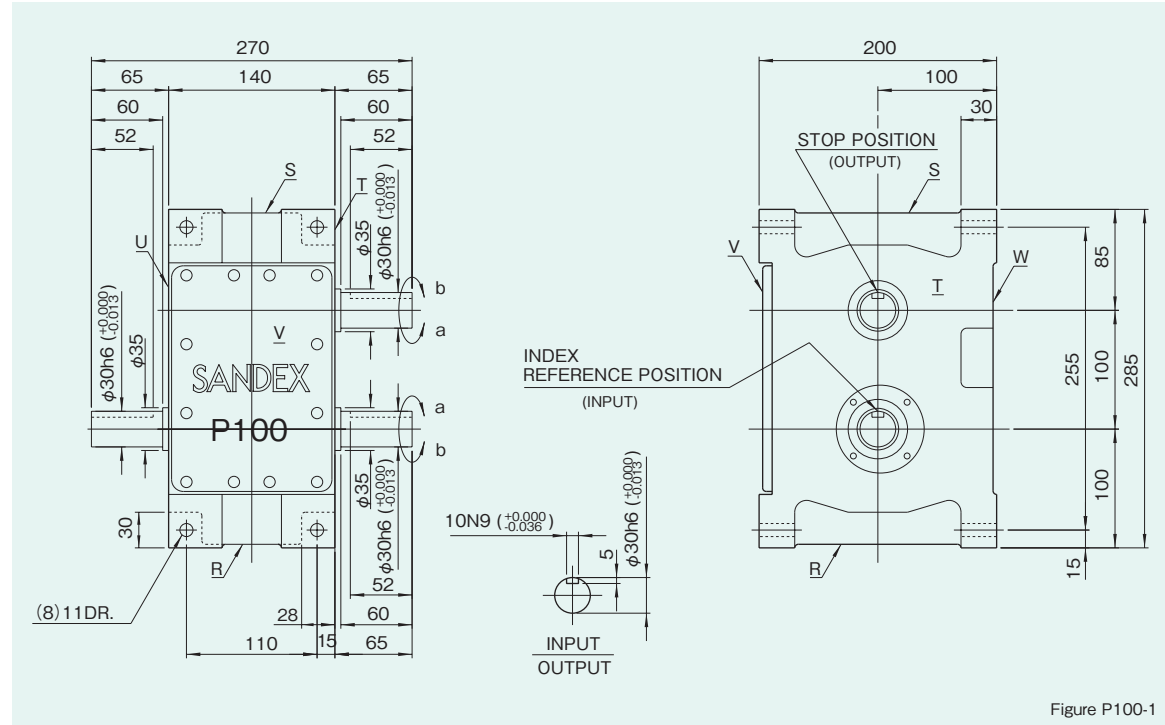
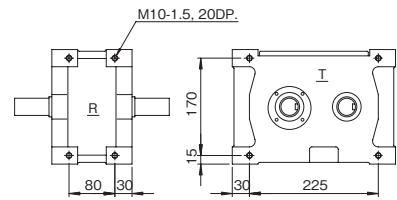


Figure P100-1

Mounting hole locations Figure P100-2



Dimension of R,S,T, and U surface

Locations of oil plug, etc., and oil capacity Figure P100-3

| Mounting position | 1   | 3   | 4   | 5   | 6   |
|-------------------|-----|-----|-----|-----|-----|
| Location          |     |     |     |     |     |
| Oil capacity (ℓ)  | 1.5 | 1.5 | 1.5 | 1.5 | 1.5 |

Precautions

- Each point indicated in the mounting positions shown in Figure P100-3 represents (starting at top) the oil plug (PT3/8), oil level (PF3/8), and drain (PT3/8).
- The mounting positions correspond to code j for the indexing, oscillating drives.
- The oil levels indicated in Figure P100-3 are given in general figures and will differ according to the profile of the cam and the number of cam followers.

Specifications

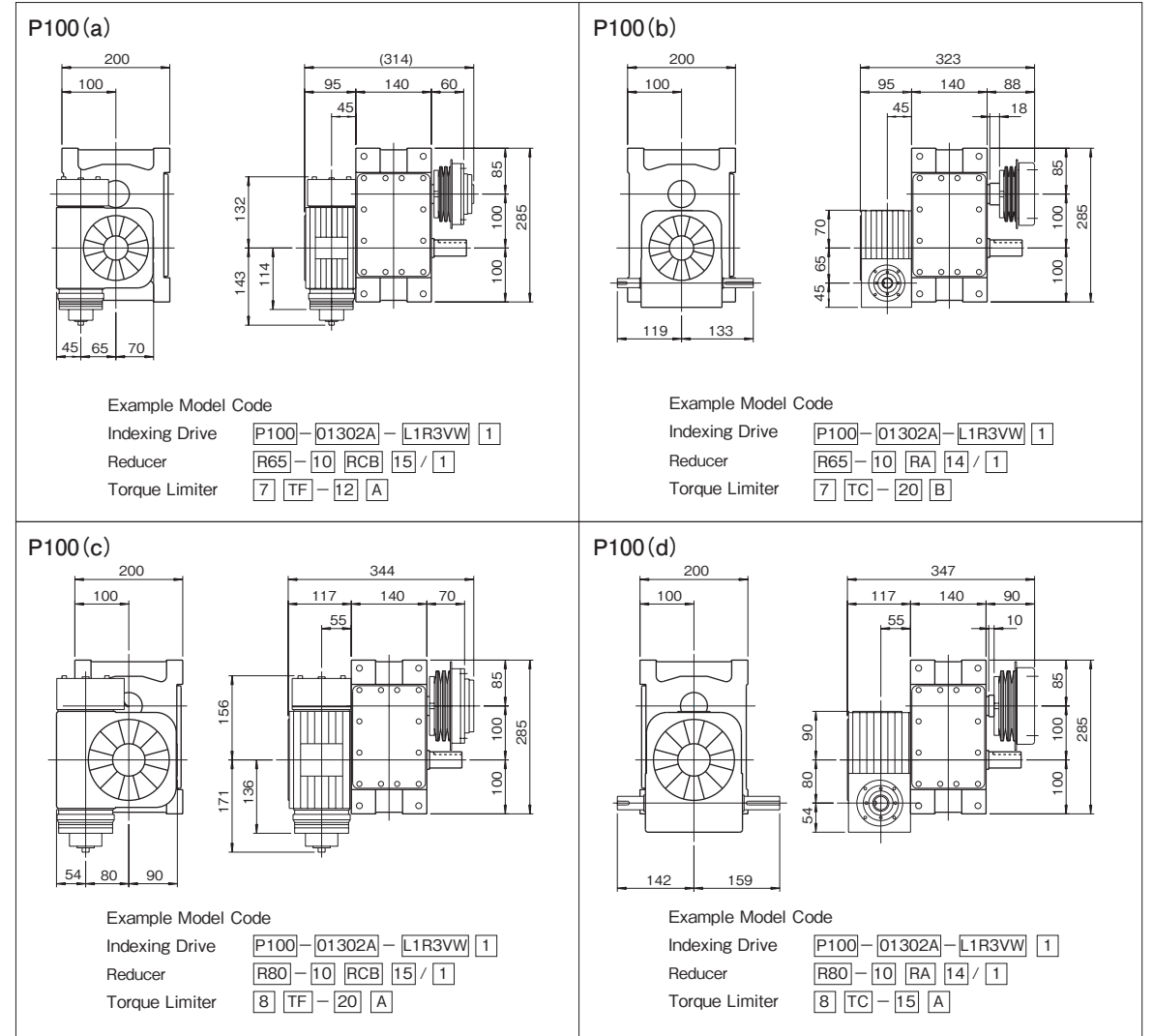
Table P100-1

| Item                         | Symbol         | Unit              | Value                          | Item                                      | Symbol         | Unit              | Value                | Item                        | Symbol | Unit | Value |
|------------------------------|----------------|-------------------|--------------------------------|---|----------------|-------------------|----------------------|-----------------------------|--------|------|-------|
| Output allowable axial load  | P <sub>1</sub> | N                 | 4704                           | Input allowable axial load                | P <sub>4</sub> | N                 | 4704                 | Indexing accuracy (1 DWELL) |        | sec  | ±60   |
| Output allowable radial load | P <sub>2</sub> | N                 | 3920                           | Input maximum repetitive bending force    | P <sub>5</sub> | N                 | 3920                 | Indexing accuracy (2 DWELL) |        | sec  | ±120  |
| Output static torque         | T <sub>s</sub> | N·m               | Refer to Torque Capacity Table | Input maximum repetitive allowable torque | P <sub>6</sub> | N·m               | 392                  | Repetitive accuracy         |        | sec  | 60    |
| Output torsional rigidity    | K <sub>1</sub> | N·m/rad           | 3.19×10 <sup>4</sup>           | Input torsional rigidity                  | K <sub>2</sub> | N·m/rad           | 3.19×10 <sup>4</sup> | Product weight              |        | kg   | 約36   |
| Output inertia               | J <sub>o</sub> | kg·m <sup>2</sup> | Refer to Torque Capacity Table | Input inertia                             | J <sub>1</sub> | kg·m <sup>2</sup> | 6.0×10 <sup>-3</sup> | Housing color               |        |      | Gray  |

Note : Input inertia : J is calculated in dwell.

(1N=0.102kgf)

Mounted accessories



Precautions

- Models P100 and E100 can be equipped with reducers R65 and R80.
- The reducer can be mounted in 16 different positions as shown on page B448.
- Models P100 and E100 can be equipped with torque limiters 7TF, 7TC, 8TF and 8TC.
- TC type torque limiters require a shaft collar for mounting.

## P125/E125 Dimensions

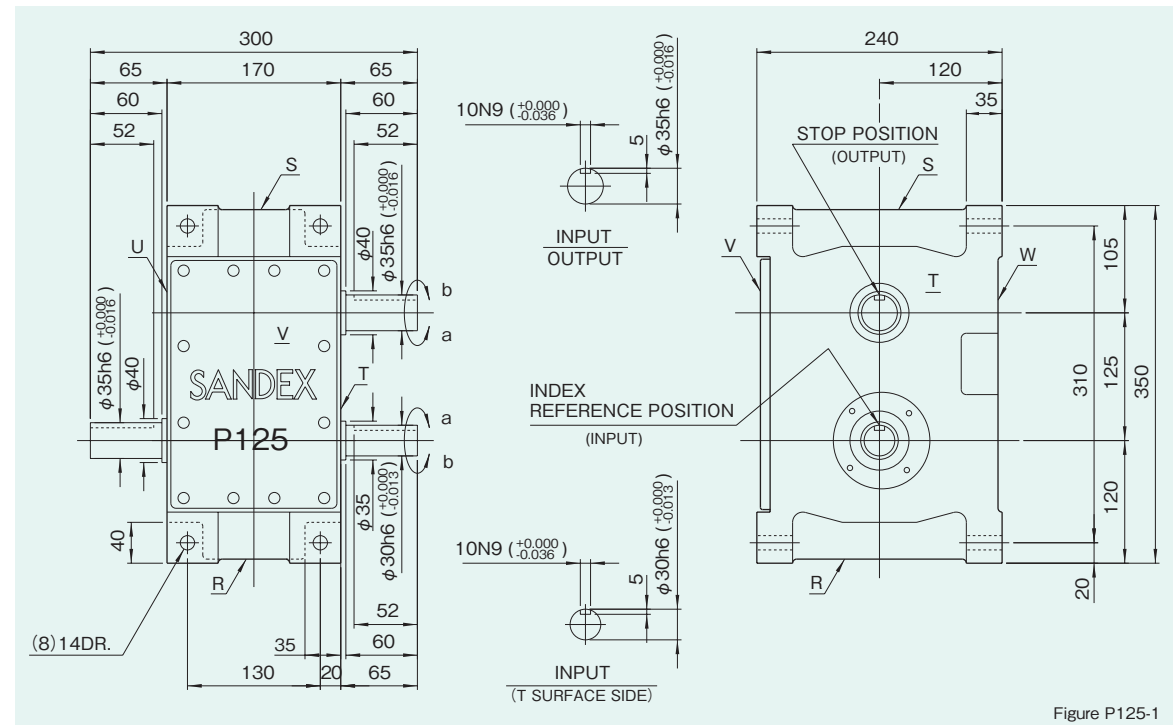
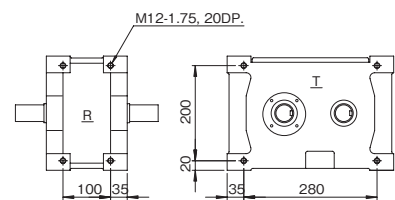


Figure P125-1

Mounting hole locations Figure P125-2



Dimension of R,S,T, and U surface

Locations of oil plug, etc., and oil capacity Figure P125-3

| Mounting position | 1   | 3   | 4   | 5   | 6   |
|-------------------|-----|-----|-----|-----|-----|
| Location          |     |     |     |     |     |
| Oil capacity (ℓ)  | 3.2 | 3.2 | 3.2 | 3.2 | 3.2 |

### Precautions

- Each point indicated in the mounting positions shown in Figure P125-3 represents (starting at top) the oil plug (PT3/8), oil level (PF3/8), and drain (PT3/8).
- The mounting positions correspond to code j for the indexing, oscillating drives.
- The oil levels indicated in Figure P125-3 are given in general figures and will differ according to the profile of the cam and the number of cam followers.

## Specifications

Table P125-1

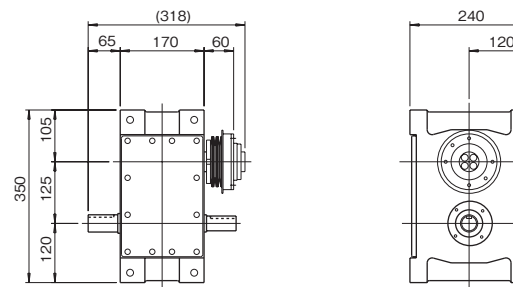
| Item                         | Symbol         | Unit              | Value                          | Item                                       | Symbol         | Unit              | Value                 | Item                        | Symbol | Unit | Value |
|------------------------------|----------------|-------------------|--------------------------------|--|----------------|-------------------|-----------------------|-----------------------------|--------|------|-------|
| Output allowable axial load  | P <sub>1</sub> | N                 | 5096                           | Input allowable axial load                 | P <sub>4</sub> | N                 | 5096                  | Indexing accuracy (1 DWELL) |        | sec  | ±60   |
| Output allowable radial load | P <sub>2</sub> | N                 | 6174                           | Input maximum repetitious bending force    | P <sub>5</sub> | N                 | 6174                  | Indexing accuracy (2 DWELL) |        | sec  | ±120  |
| Output static torque         | T <sub>s</sub> | N·m               | Refer to Torque Capacity Table | Input maximum repetitious allowable torque | P <sub>6</sub> | N·m               | 637                   | Repetitive accuracy         |        | sec  | 60    |
| Output torsional rigidity    | K <sub>1</sub> | N·m / rad         | 4.93×10 <sup>4</sup>           | Input torsional rigidity                   | K <sub>2</sub> | N·m / rad         | 4.93×10 <sup>4</sup>  | Product weight              |        | kg   | 65    |
| Output inertia               | J <sub>o</sub> | kg·m <sup>2</sup> | Refer to Torque Capacity Table | Input inertia                              | J <sub>1</sub> | kg·m <sup>2</sup> | 1.63×10 <sup>-2</sup> | Housing color               |        | Gray |       |

Note : Input inertia : J is calculated in dwell.

(1N=0.102kgf)

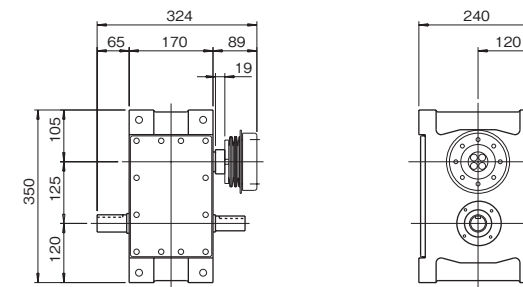
## Mounted accessories

P125 (a)



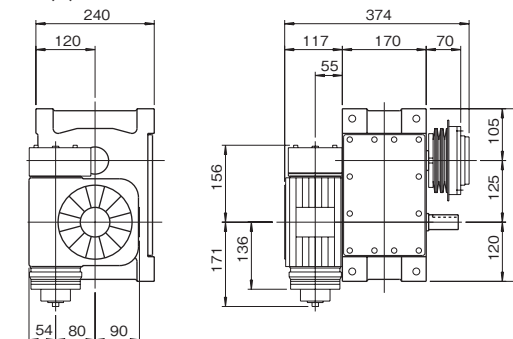
Example Model Code  
 Indexing Drive P125-01302A-L13VW 1  
 Torque Limiter 7 TF-40 B

P125 (b)



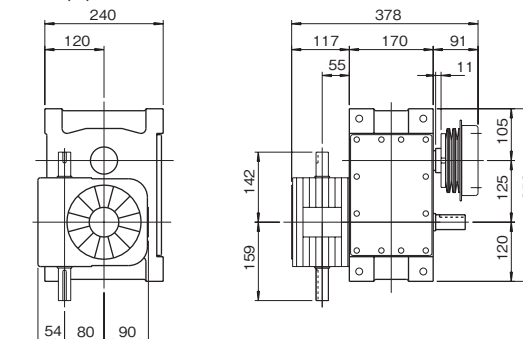
Example Model Code  
 Indexing Drive P125-01302A-L13VW 1  
 Torque Limiter 7 TC-35 B

P125 (c)



Example Model Code  
 Indexing Drive P125-01302A-L1R3VW 1  
 Reducer R80-10 RCB 15 / 1  
 Torque Limiter 8 TF-40 B

P125 (d)



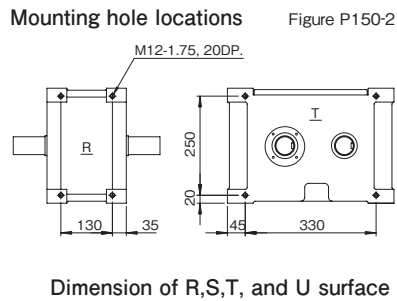
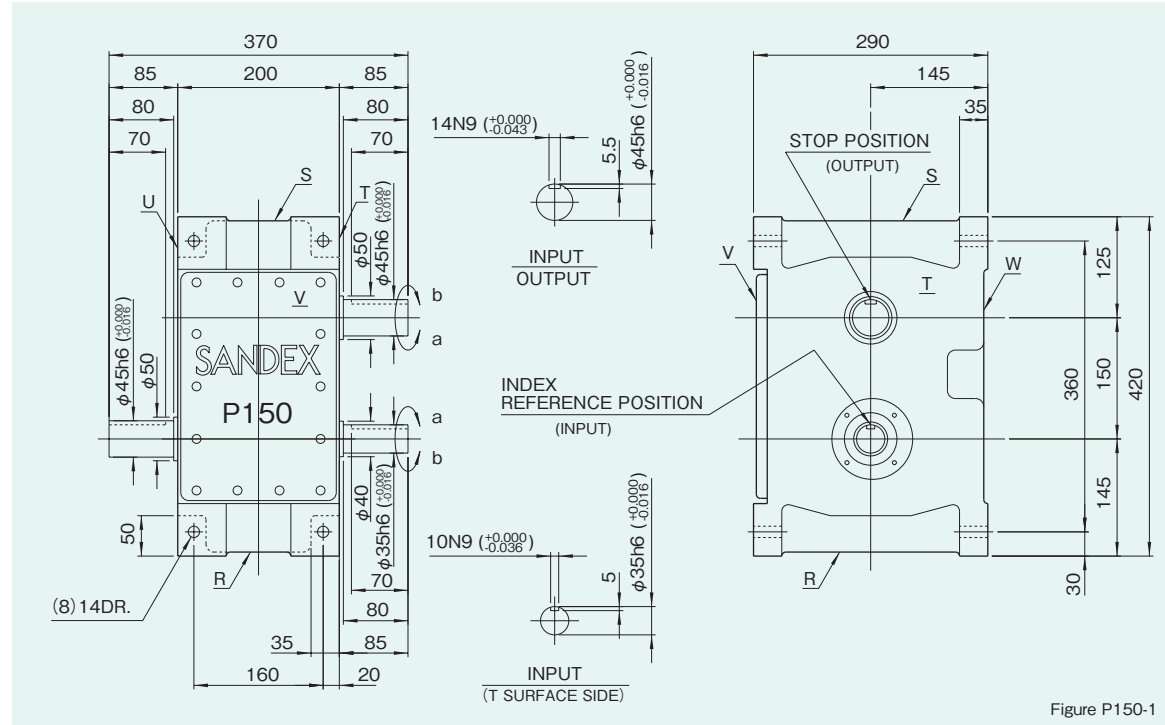
Example Model Code  
 Indexing Drive P125-01302A-L1R3VW 1  
 Reducer R80-10 RA 15 / 1  
 Torque Limiter 8 TC-45 B

### Precautions

- Models P125 and E125 can be equipped with reducer R80.
- The reducer can be mounted in 16 different positions as shown on page B448.
- Models P125 and E125 can be equipped with torque limiters 7TF, 7TC, 8TF and 8TC.
- TC type torque limiters require a shaft collar for mounting.



P150/E150 Dimensions



Locations of oil plug, etc., and oil capacity Figure P150-3

| Mounting position | 1   | 3   | 4   | 5   | 6   |
|-------------------|-----|-----|-----|-----|-----|
| Location          |     |     |     |     |     |
| Oil capacity (ℓ)  | 5.5 | 5.5 | 5.5 | 5.5 | 5.5 |

Precautions

- Each point indicated in the mounting positions shown in Figure P150-3 represents (starting at top) the oil plug (PT1/2), oil level (PF1/2), and drain (PT1/2).
- The mounting positions correspond to code j for the indexing, oscillating drives.
- The oil levels indicated in Figure P150-3 are given in general figures and will differ according to the profile of the cam and the number of cam followers.

Specifications

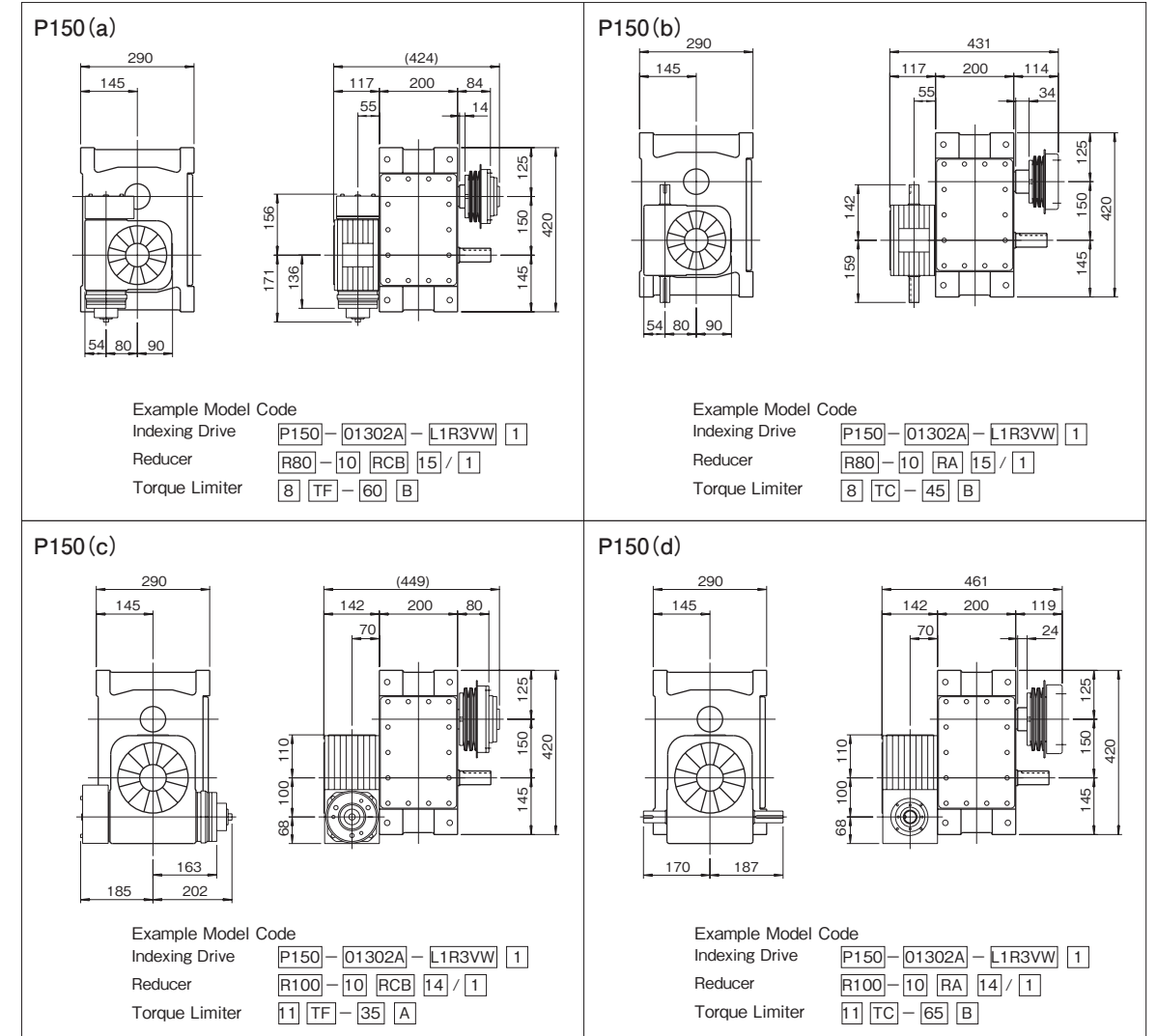
Tbale P150-1

| Item                         | Symbol         | Unit              | Value                          | Item                                       | Symbol         | Unit              | Value                | Item                        | Symbol | Unit | Value |
|------------------------------|----------------|-------------------|--------------------------------|--|----------------|-------------------|----------------------|-----------------------------|--------|------|-------|
| Output allowable axial load  | P <sub>1</sub> | N                 | 7350                           | Input allowable axial load                 | P <sub>4</sub> | N                 | 7350                 | Indexing accuracy (1 DWELL) |        | sec  | ±60   |
| Output allowable radial load | P <sub>2</sub> | N                 | 8428                           | Input maximum repetitious bending force    | P <sub>5</sub> | N                 | 8624                 | Indexing accuracy (2 DWELL) |        | sec  | ±120  |
| Output static torque         | T <sub>s</sub> | N·m               | Refer to Torque Capacity Table | Input maximum repetitious allowable torque | P <sub>6</sub> | N·m               | 1323                 | Repetitive accuracy         |        | sec  | 60    |
| Output torsional rigidity    | K <sub>1</sub> | N·m/rad           | 1.23×10 <sup>5</sup>           | Input torsional rigidity                   | K <sub>2</sub> | N·m/rad           | 1.76×10 <sup>5</sup> | Product weight              |        | kg   | 100   |
| Output inertia               | J <sub>o</sub> | kg·m <sup>2</sup> | Refer to Torque Capacity Table | Input inertia                              | J <sub>1</sub> | kg·m <sup>2</sup> | 4.0×10 <sup>-2</sup> | Housing color               |        | Gray |       |

Note : Input inertia : J is calculated in dwell.

(1N=0.102kgf)

Mounted accessories



Precautions

- Models P150 and E150 can be equipped with reducer R80 and R100.
- The reducer can be mounted in 16 different positions as shown on page B448.
- Models P150 and E150 can be equipped with torque limiters 8TF, 8TC, 11TF and 11TC.
- Torque limiters 8TF, 8TC and 11TC require a shaft collar for mounting.

P175/E175 Dimensions

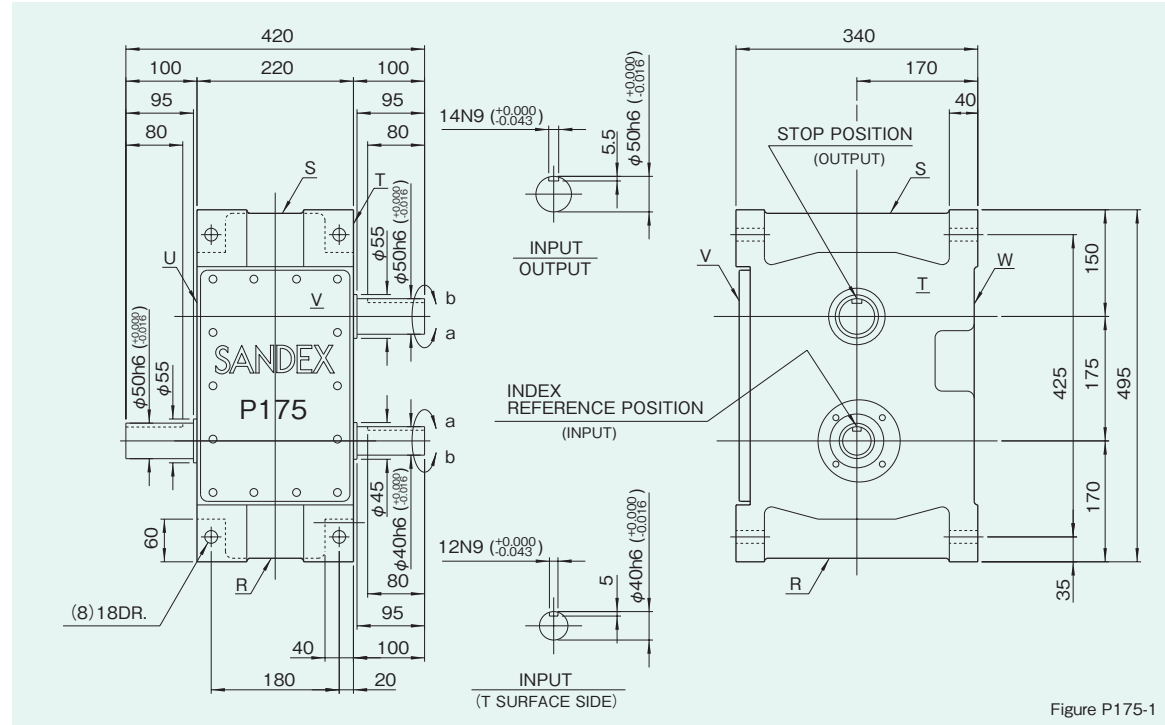
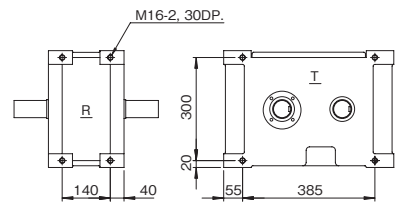


Figure P175-1

Mounting hole locations Figure P175-2



Dimension of R,S,T, and U surface

Locations of oil plug, etc., and oil capacity Figure P175-3

| Mounting position | 1 | 3 | 4 | 5 | 6 |
|-------------------|---|---|---|---|---|
| Location          |   |   |   |   |   |
| Oil capacity (ℓ)  | 8 | 8 | 8 | 8 | 8 |

Precautions

- Each point indicated in the mounting positions shown in Figure P175-3 represents (starting at top) the oil plug (PT1/2), oil level (PF3/4), and drain (PT1/2).
- The mounting positions correspond to code j for the indexing, oscillating drives.
- The oil levels indicated in Figure P175-3 are given in general figures and will differ according to the profile of the cam and the number of cam followers.

Specifications

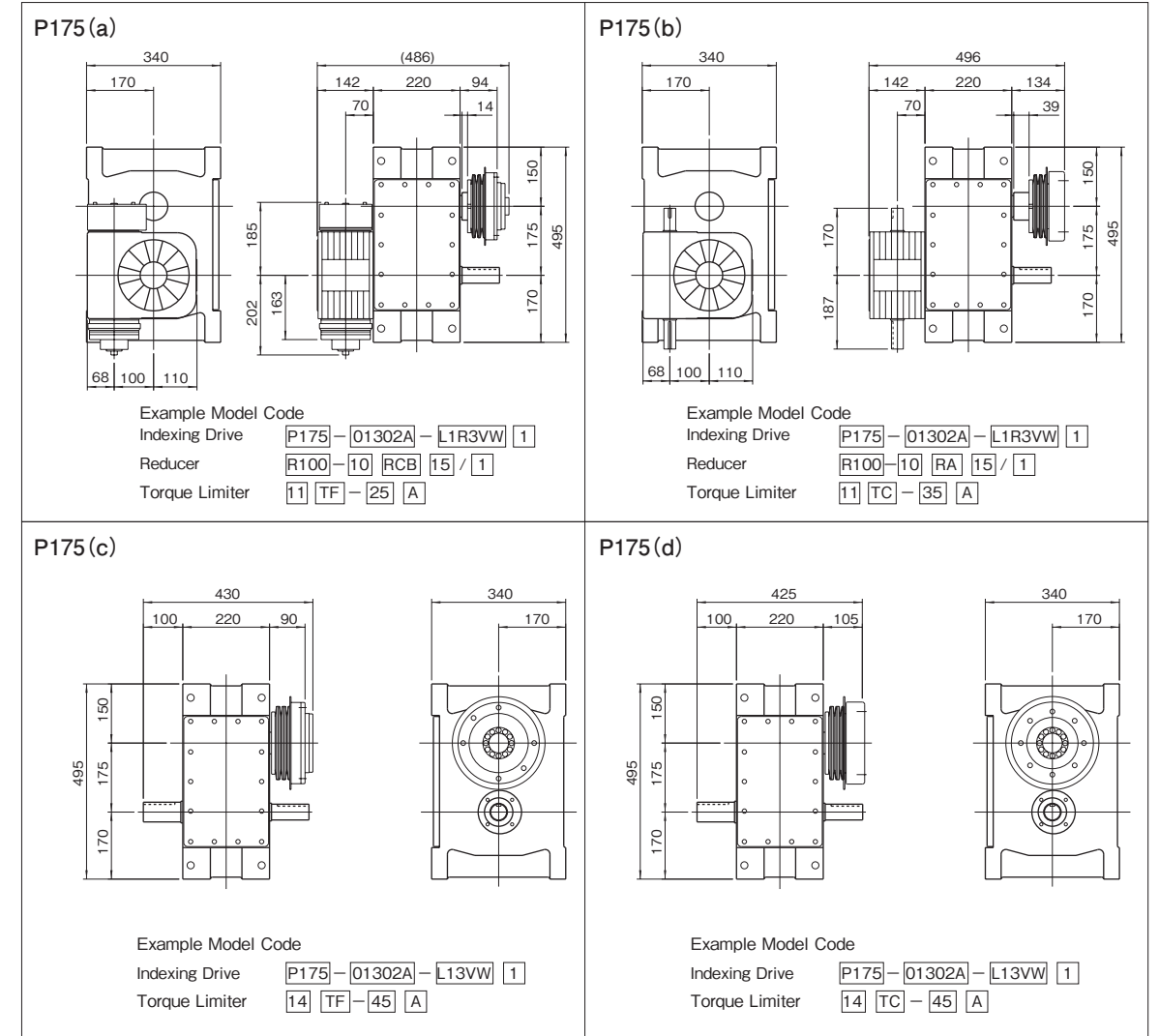
Table P175-1

| Item                         | Symbol         | Unit              | Value                          | Item                                       | Symbol         | Unit              | Value                | Item                        | Symbol | Unit | Value |
|------------------------------|----------------|-------------------|--------------------------------|--|----------------|-------------------|----------------------|-----------------------------|--------|------|-------|
| Output allowable axial load  | P <sub>1</sub> | N                 | 9016                           | Input allowable axial load                 | P <sub>4</sub> | N                 | 9016                 | Indexing accuracy (1 DWELL) |        | sec  | ±60   |
| Output allowable radial load | P <sub>2</sub> | N                 | 9800                           | Input maximum repetitious bending force    | P <sub>5</sub> | N                 | 9800                 | Indexing accuracy (2 DWELL) |        | sec  | ±120  |
| Output static torque         | T <sub>s</sub> | N·m               | Refer to Torque Capacity Table | Input maximum repetitious allowable torque | P <sub>6</sub> | N·m               | 1813                 | Repetitive accuracy         |        | sec  | 60    |
| Output torsional rigidity    | K <sub>1</sub> | N·m / rad         | 1.65×10 <sup>5</sup>           | Input torsional rigidity                   | K <sub>2</sub> | N·m / rad         | 1.65×10 <sup>5</sup> | Product weight              |        | kg   | 160   |
| Output inertia               | J <sub>o</sub> | kg·m <sup>2</sup> | Refer to Torque Capacity Table | Input inertia                              | J <sub>1</sub> | kg·m <sup>2</sup> | 7.5×10 <sup>-2</sup> | Housing color               |        | Gray |       |

Note : Input inertia : J is calculated in dwell.

(1N=0.102kgf)

Mounted accessories



Precautions

- Models P175 and E175 can be equipped with reducer R100.
- The reducer can be mounted in 16 different positions as shown on page B448.
- Models P175 and E175 can be equipped with torque limiters 11TF, 11TC, 14TF and 14TC.
- Torque limiters 11TF and 11TC require a shaft collar for mounting.



P200/E200 Dimensions

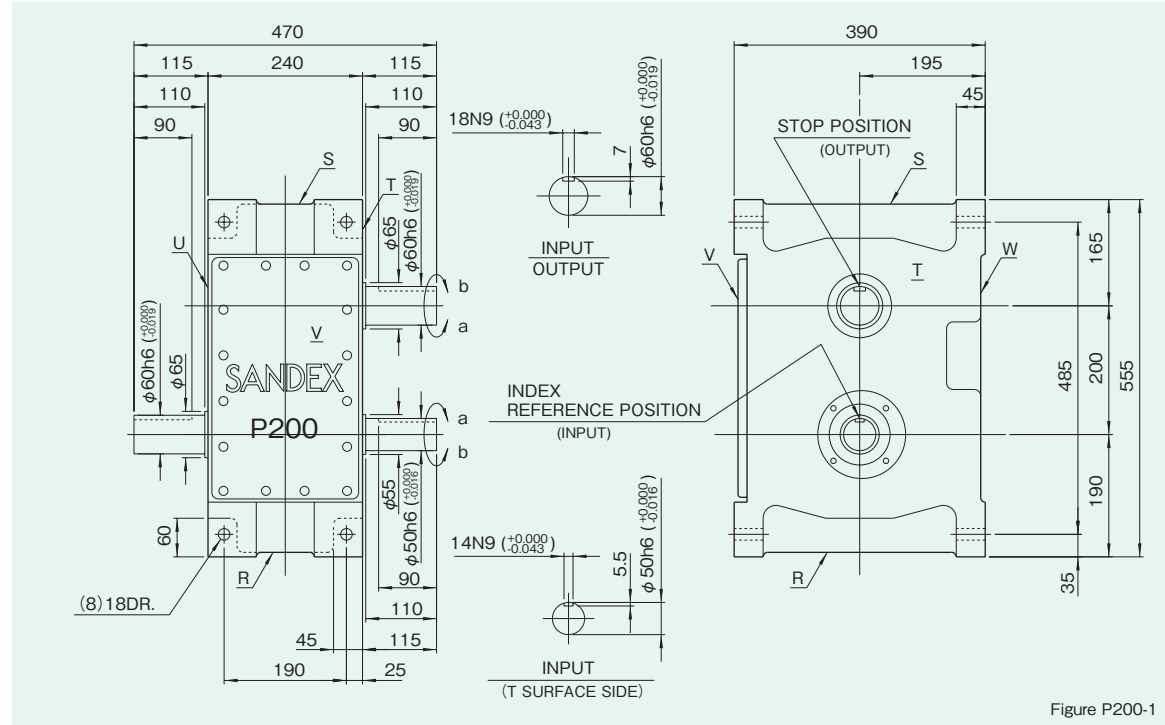
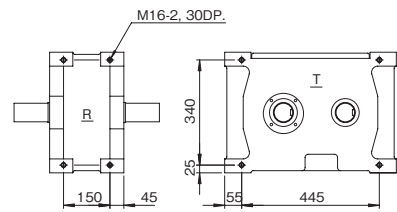


Figure P200-1

Mounting hole locations Figure P200-2



Dimension of R,S,T, and U surface

Locations of oil plug, etc., and oil capacity Figure P200-3

| Mounting position | 1  | 3  | 4  | 5  | 6  |
|-------------------|----|----|----|----|----|
| Location          |    |    |    |    |    |
| Oil capacity (ℓ)  | 12 | 12 | 12 | 12 | 12 |

Precautions

- Each point indicated in the mounting positions shown in Figure P200-3 represents (starting at top) the oil plug (PT1/2), oil level (PF3/4), and drain (PT1/2).
- The mounting positions correspond to code j for the indexing, oscillating drives.
- The oil levels indicated in Figure P200-3 are given in general figures and will differ according to the profile of the cam and the number of cam followers.

Specifications

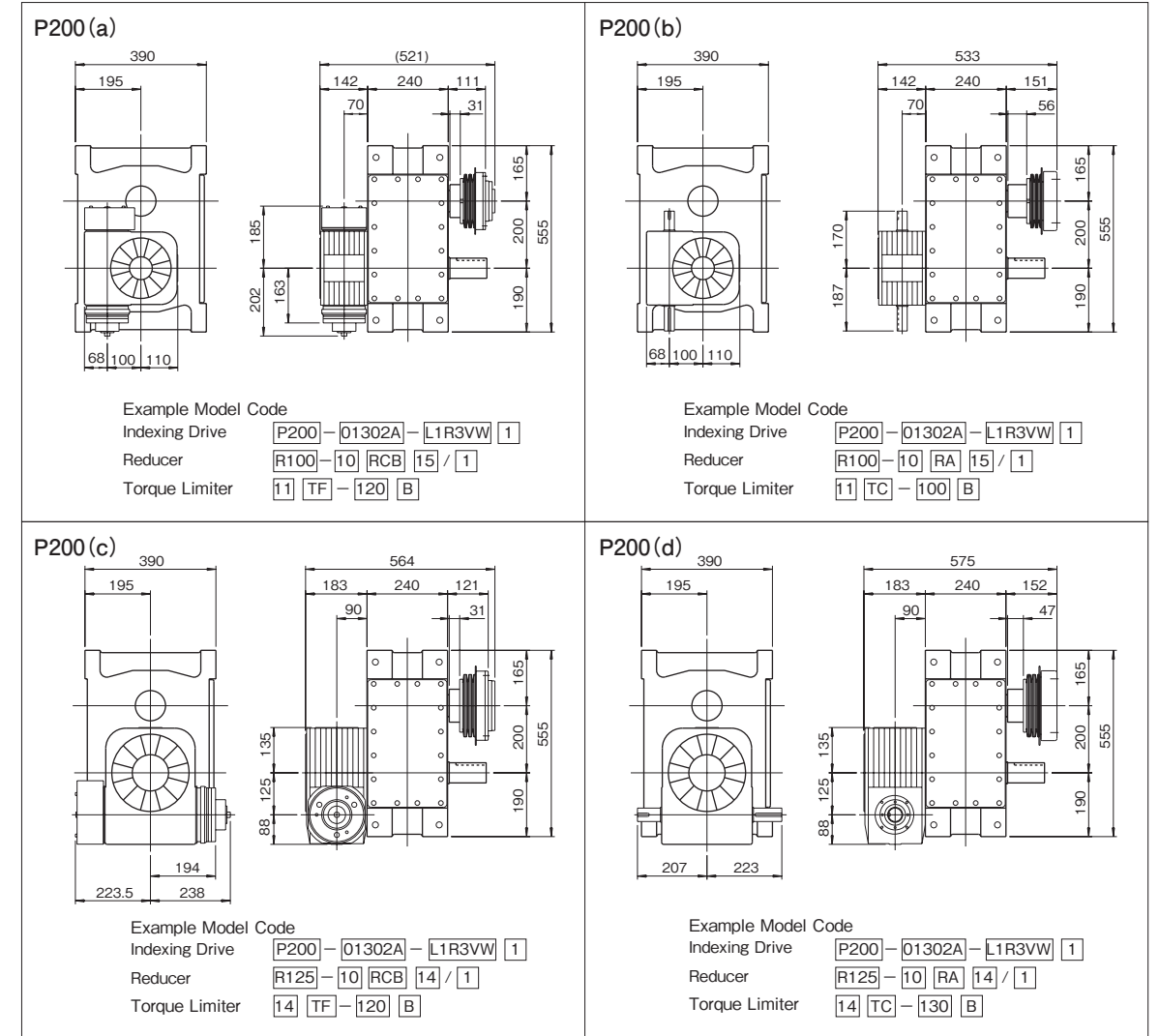
Table P200-1

| Item                         | Symbol         | Unit              | Value                          | Item                                      | Symbol         | Unit              | Value                | Item                        | Symbol | Unit | Value |
|------------------------------|----------------|-------------------|--------------------------------|---|----------------|-------------------|----------------------|-----------------------------|--------|------|-------|
| Output allowable axial load  | P <sub>1</sub> | N                 | 12936                          | Input allowable axial load                | P <sub>4</sub> | N                 | 12936                | Indexing accuracy (1 DWELL) |        | sec  | ±60   |
| Output allowable radial load | P <sub>2</sub> | N                 | 13524                          | Input maximum repetitive bending force    | P <sub>5</sub> | N                 | 18620                | Indexing accuracy (2 DWELL) |        | sec  | ±120  |
| Output static torque         | T <sub>s</sub> | N·m               | Refer to Torque Capacity Table | Input maximum repetitive allowable torque | P <sub>6</sub> | N·m               | 3136                 | Repetitive accuracy         |        | sec  | 60    |
| Output torsional rigidity    | K <sub>1</sub> | N·m / rad         | 3.19×10 <sup>5</sup>           | Input torsional rigidity                  | K <sub>2</sub> | N·m / rad         | 3.19×10 <sup>5</sup> | Product weight              |        | kg   | 220   |
| Output inertia               | J <sub>o</sub> | kg·m <sup>2</sup> | Refer to Torque Capacity Table | Input inertia                             | J <sub>1</sub> | kg·m <sup>2</sup> | 0.148                | Housing color               |        | Gray |       |

Note : Input inertia : J is calculated in dwell.

(1N=0.102kgf)

Mounted accessories



Precautions

- Models P200 and E200 can be equipped with reducers R100 and R125.
- The reducer can be mounted in 16 different positions as shown on page B448.
- Models P200 and E200 can be equipped with torque limiters 11TF, 11TC, 14TF and 14TC.
- Torque limiters require a shaft collar for mounting.

P250/E250 Dimensions

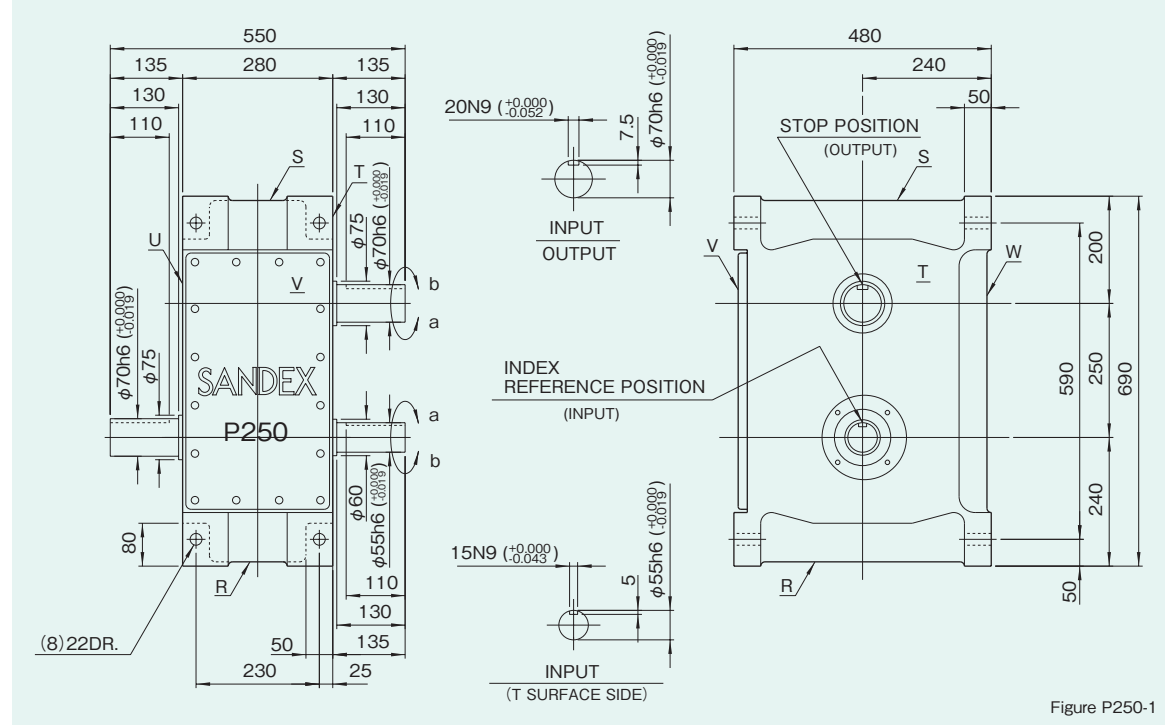
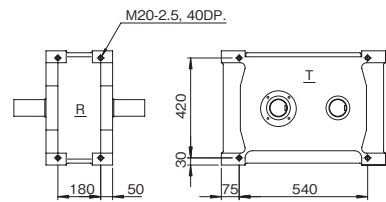


Figure P250-1

Mounting hole locations Figure P250-2



Dimension of R,S,T, and U surface

Locations of oil plug, etc., and oil capacity Figure P250-3

| Mounting position | 1  | 3  | 4  | 5  | 6  |
|-------------------|----|----|----|----|----|
| Location          |    |    |    |    |    |
| Oil capacity (ℓ)  | 20 | 20 | 20 | 20 | 20 |

Precautions

- Each point indicated in the mounting positions shown in Figure P250-3 represents (starting at top) the oil plug (PT1/2), oil level (PF3/4), and drain (PT1/2).
- The mounting positions correspond to code j for the indexing, oscillating drives.
- The oil levels indicated in Figure P250-3 are given in general figures and will differ according to the profile of the cam and the number of cam followers.

Specifications

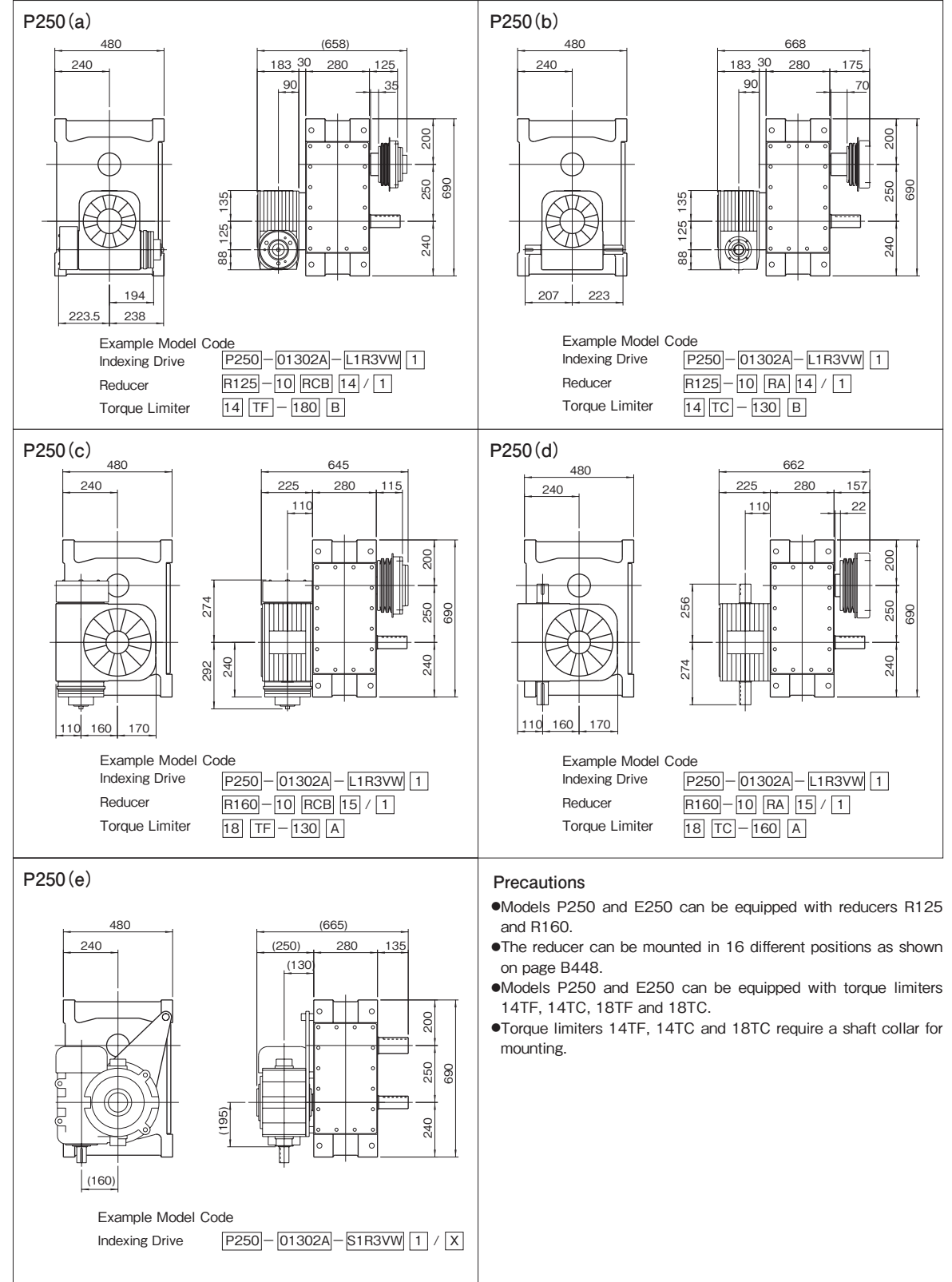
Table P250-1

| Item                         | Symbol         | Unit              | Value                          | Item                                      | Symbol         | Unit              | Value                | Item                        | Symbol | Unit | Value |
|------------------------------|----------------|-------------------|--------------------------------|---|----------------|-------------------|----------------------|-----------------------------|--------|------|-------|
| Output allowable axial load  | P <sub>1</sub> | N                 | 15190                          | Input allowable axial load                | P <sub>4</sub> | N                 | 15190                | Indexing accuracy (1 DWELL) |        | sec  | ±60   |
| Output allowable radial load | P <sub>2</sub> | N                 | 15288                          | Input maximum repetitive bending force    | P <sub>5</sub> | N                 | 23520                | Indexing accuracy (2 DWELL) |        | sec  | ±120  |
| Output static torque         | T <sub>s</sub> | N·m               | Refer to Torque Capacity Table | Input maximum repetitive allowable torque | P <sub>6</sub> | N·m               | 4900                 | Repetitive accuracy         |        | sec  | 60    |
| Output torsional rigidity    | K <sub>1</sub> | N·m /rad          | 5.26×10 <sup>5</sup>           | Input torsional rigidity                  | K <sub>2</sub> | N·m /rad          | 5.26×10 <sup>5</sup> | Product weight              |        | kg   | 350   |
| Output inertia               | J <sub>o</sub> | kg·m <sup>2</sup> | Refer to Torque Capacity Table | Input inertia                             | J <sub>1</sub> | kg·m <sup>2</sup> | 0.495                | Housing color               |        |      | Gray  |

Note : Input inertia : J is calculated in dwell.

(1N=0.102kgf)

Mounted accessories



Precautions

- Models P250 and E250 can be equipped with reducers R125 and R160.
- The reducer can be mounted in 16 different positions as shown on page B448.
- Models P250 and E250 can be equipped with torque limiters 14TF, 14TC, 18TF and 18TC.
- Torque limiters 14TF, 14TC and 18TC require a shaft collar for mounting.

P320/E320 Dimensions

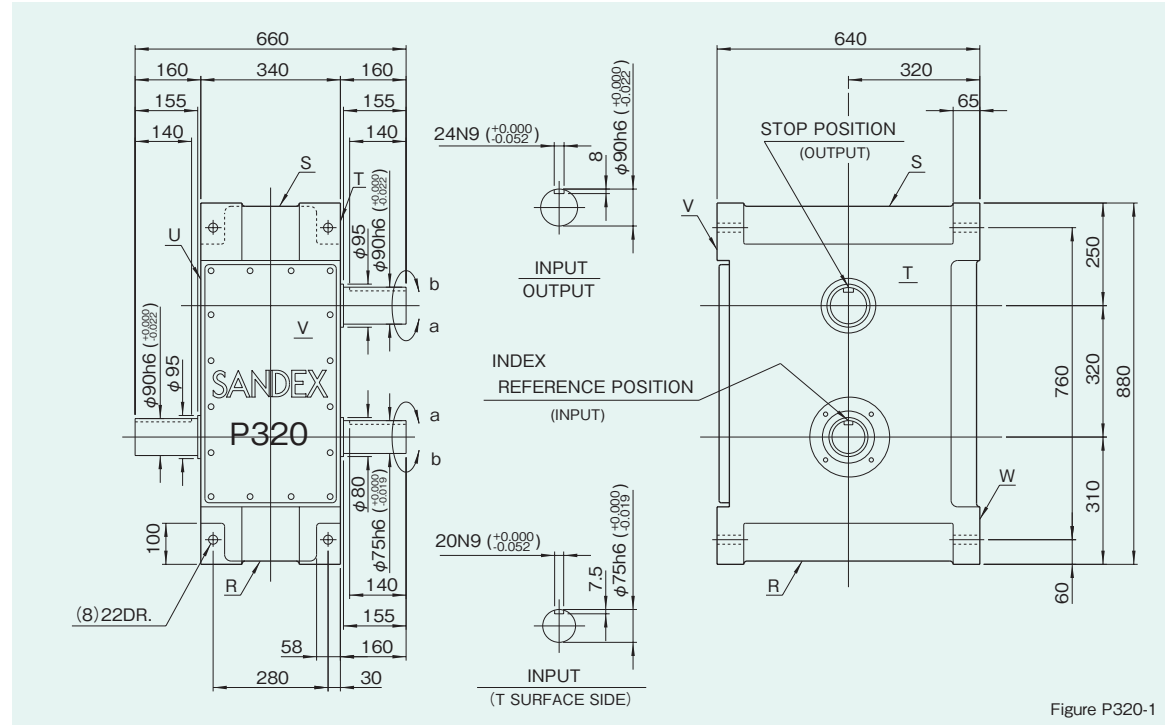


Figure P320-1

Mounting hole locations

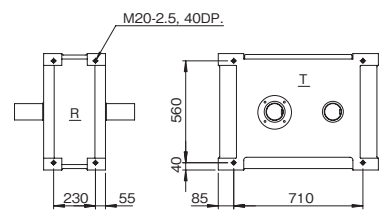


Figure P320-2

Dimension of R,S,T, and U surface

Locations of oil plug, etc., and oil capacity

| Mounting position | 1  | 5  |
|-------------------|----|----|
| Location          |    |    |
| Oil capacity (ℓ)  | 45 | 45 |

Figure P320-3

Precautions

- Each point indicated in the mounting positions shown in Figure P320-3 represents (starting at top) the oil plug (PT1/2), oil level (PF3/4), and drain (PT1/2).
- The mounting positions correspond to code j for the indexing, oscillating drives.
- The oil levels indicated in Figure P320-3 are given in general figures and will differ according to the profile of the cam and the number of cam followers.
- When specifying mounting positions 3, 4, 5, or 6, consult us for positioning the oil plug, oil level, and drain.

Specifications

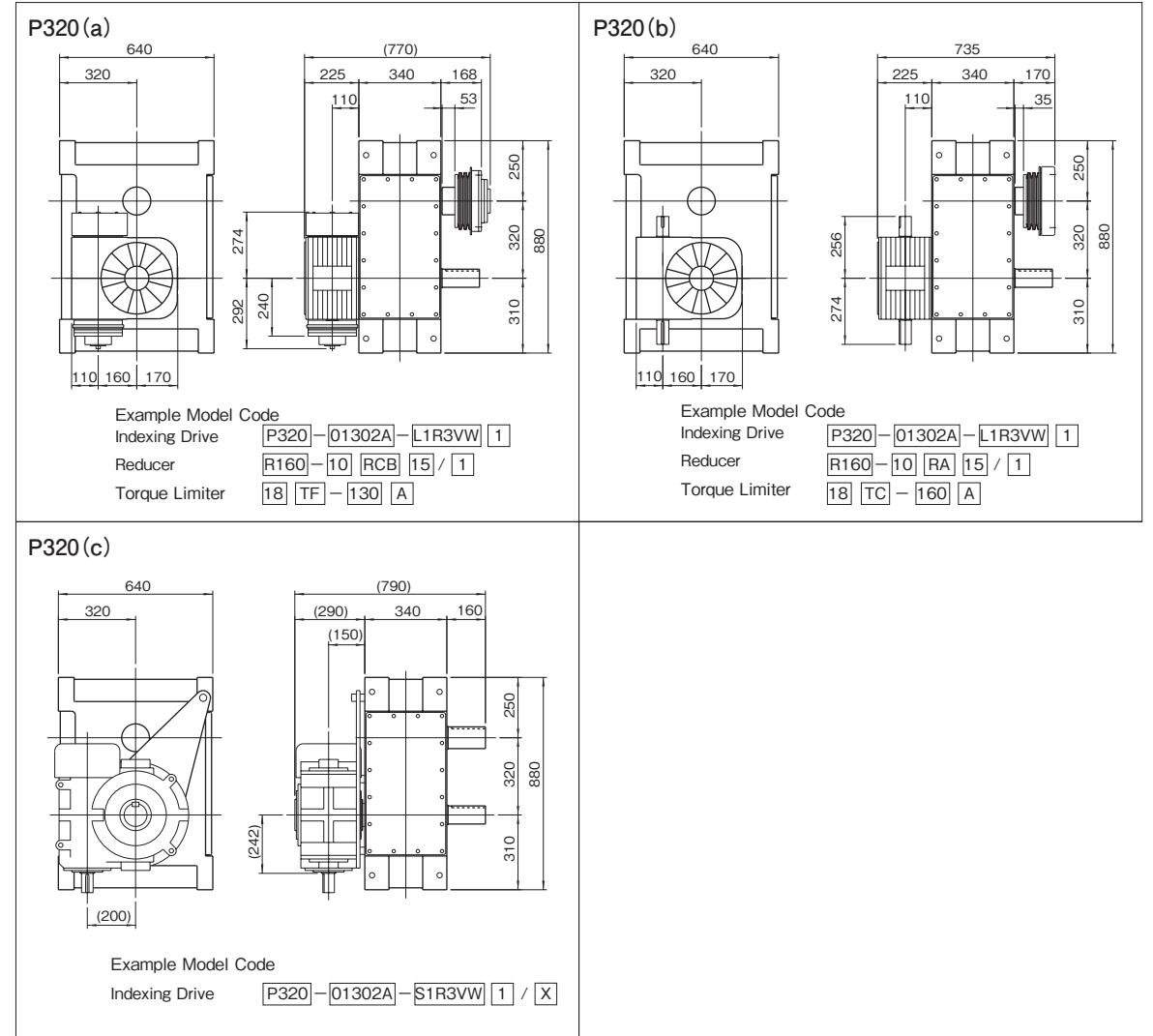
Table P320-1

| Item                         | Symbol         | Unit              | Value                          | Item                                      | Symbol         | Unit              | Value                | Item                        | Symbol | Unit | Value |
|------------------------------|----------------|-------------------|--------------------------------|---|----------------|-------------------|----------------------|-----------------------------|--------|------|-------|
| Output allowable axial load  | P <sub>1</sub> | N                 | 22540                          | Input allowable axial load                | P <sub>4</sub> | N                 | 22540                | Indexing accuracy (1 DWELL) |        | sec  | ±60   |
| Output allowable radial load | P <sub>2</sub> | N                 | 23520                          | Input maximum repetitive bending force    | P <sub>5</sub> | N                 | 41160                | Indexing accuracy (2 DWELL) |        | sec  | ±120  |
| Output static torque         | T <sub>s</sub> | N·m               | Refer to Torque Capacity Table | Input maximum repetitive allowable torque | P <sub>6</sub> | N·m               | 10780                | Repetitive accuracy         |        | sec  | 60    |
| Output torsional rigidity    | K <sub>1</sub> | N·m / rad         | 1.08×10 <sup>6</sup>           | Input torsional rigidity                  | K <sub>2</sub> | N·m / rad         | 1.08×10 <sup>6</sup> | Product weight              |        | kg   | 750   |
| Output inertia               | J <sub>o</sub> | kg·m <sup>2</sup> | Refer to Torque Capacity Table | Input inertia                             | J <sub>1</sub> | kg·m <sup>2</sup> | 1.7                  | Housing color               |        | Gray |       |

Note : Input inertia : J is calculated in dwell.

(1N=0.102kgf)

Mounted accessories



Precautions

- Models P320 and E320 can be equipped with reducer R160.
- The reducer can be mounted in 16 different positions as shown on page B448.
- Models P320 and E320 can be equipped with torque limiters 18TF and 18TC.
- Torque limiters require a shaft collar for mounting.