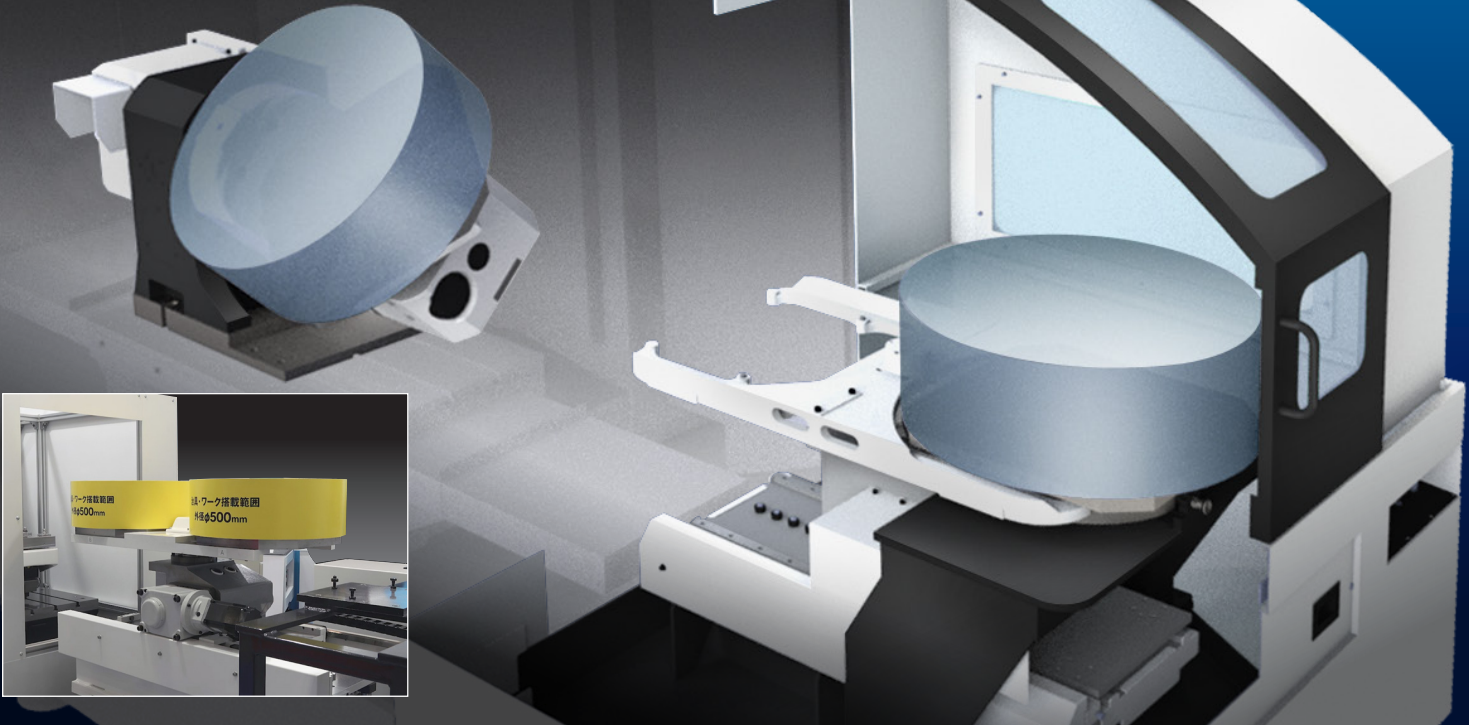


Suggesting automation for Variable quantity production at #30MC

SANKYO
SEISAKUSHO CO.

Sankyo Pallet Master SPM400 NEW

- Pallet size: □ 400mm
- Maximum load capacity: 100kg x 2 (Including pallet)
- Pallet exchange time: 15 seconds



As consumer demands become more diversified and product life cycles for automobiles, home appliances and other products become shorter, "Variable quantity production" has become a key word in parts processing plants. The previous mass production-based production systems can no longer meet the demand, and flexible production methods are required.

At the same time, "Labor-saving" "Unmanned" have become urgent issues to cope with the decline in labor force. Sankyo Seisakusho's "Sankyo Pallet Master SPM400" has been developed to solve these problems. The drive components of each device use cam technology that Sankyo Seisakusho has developed over many years allowing stable and safe use over long periods of time.

- Heavy-duty transport system for handling large workpieces of #30 machining center.
- Production is possible without stopping the machine, equipped with a setup table.
- Replacement of the pallets is done from the side door of the machining center, allowing easy access from the front door.



We will explain more in the video!

Standard system configuration

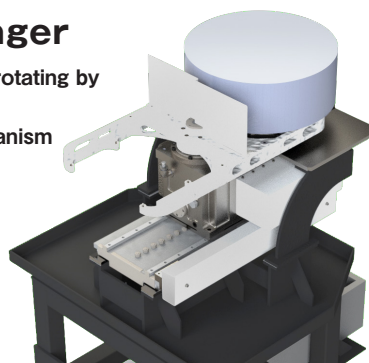
The highly rigid and compact lever mechanism is achieved through the use of a unique bearing structure. The innovative 2-axis tilting turntable expands the working area of the #30MC.



**RollerDrive®
RT500**

Pallet Changer

Lifting, lowering and rotating by one drive motor. Optimized cam mechanism performs high speed operation smoothly.



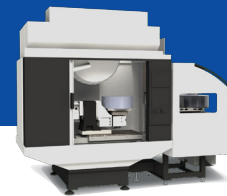
High-power, high-speed linear positioning device Liner unit



Linear drive use cam mechanisms to significantly reduce workpiece loading and unloading times.

Suggesting automation for Variable quantity production at #30MC

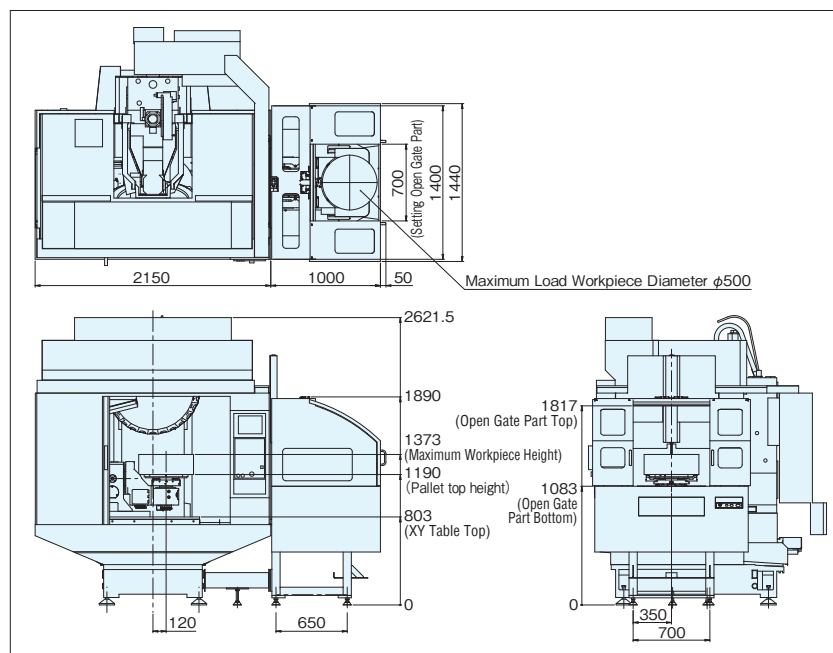
Sankyo Pallet Master SPM400



Specifications

Items	Unit	Model:SPM400
Pallet dimensions	mm	400×400
Maximum load capacity	kg	100 (including pallet)
Pallet top height	mm	1190 (1200mm when using T-groove pallet)
Pallet exchange time	sec	15
Pallet materials	—	Steel
Body machine size	mm	1400×1050×H1890
Clamping force	kN	16.0
Repeatability	mm	0.003
Air pressure source	MPa	0.4MPa

Dimensions



Connectable machine type

α -D28LiB5ADV Plus Y500
 α -D21LiB5ADV Plus Y500
 α -D14LiB5ADV Plus Y500

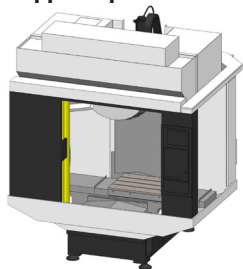


α -D21LiB5ADV Plus
 α -D14LiB5ADV Plus

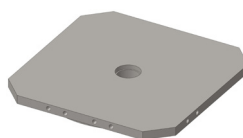


Standard System Configuration

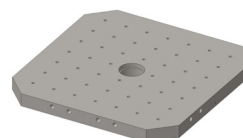
Customer-supplied products



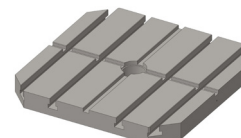
※ Required items: Pallet



Flat pallet
35kg

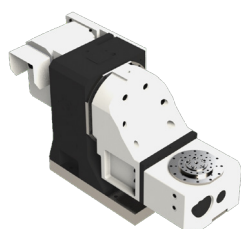


Tapped hole pallet
35kg

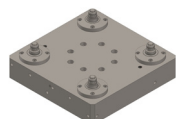


T-slot pallet
45kg

Standard accessories



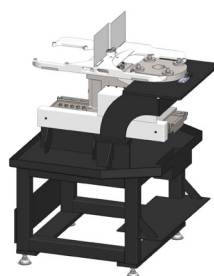
① RT500



② Clamp base



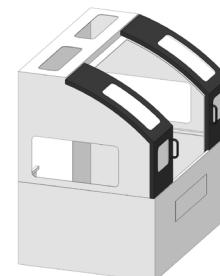
③ Frame connection beam



④ APC mechanism part
Including Standard setup stand



⑤ Automatic shutter



⑥ Safety cover



■ Headquarters (International Sales Division)
 3-37-3 Tabatashinmachi Kita-ku Tokyo Japan 114-8538
 Phone: +81-(0)3-3800-3305 Fax: +81-(0)3-3800-3378
 Email: overseas@sankyo-seisakusho.co.jp

■ Sankyo Korea Co., Ltd.
 Phone: +82-(0)31-895-5991 Email: kr-sales@rollerdrive.com

■ Sankyo Seisakusho Co. Taiwan Branch
 Phone: +886-(0)4-2359-4048 Email: tw-sales@rollerdrive.com

■ Sankyo Works (Thailand) Co., Ltd.
 Phone: +66-(0)2-516-5355 Email: sales@sankyo-works.co.th

■ Sankyo America Inc.
 Phone: +1-(0)937-498-4901
 Email: sales@sankyoautomation.com

■ Sankyo China Trading Co., Ltd.
 Phone: +86-(0)21-5445-2813
 Email: sales@sankyochina-trading.com

Home page



<https://www.sankyo-seisakusho.co.jp>

SPM400-2025/04E(DT)