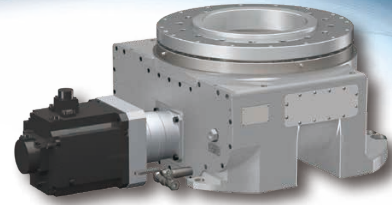




# HorizonDrive SH500A



## Product Specifications

Model		SH500A
Output table diameter	mm	Φ 470
Output hollow diameter	mm	Φ 170
Allowable payload [Allowable thrust]	kg [N]	5,000 [49,000]
Allowable moment load	N · m	12,140
Gear ratio		168.75
Maximum rotational frequency [Allowable output rotational frequency]	min <sup>-1</sup>	20 (120° /sec)
Rated output rotational frequency	min <sup>-1</sup>	15
Repeatability	mm	± 0.075 (R = 500mm)
Rated torque	N · m	4,820
Maximum allowable instantaneous torque	N · m	15,810
Allowable start/stop torque	N · m	7,900
Internal moment of inertia at the input shaft	kg · m <sup>2</sup>	6.51 × 10 <sup>-4</sup>
Recommended motor capacity	kW	5
Paint color		Silver
Product weight	kg	380
Rated lifetime	h	6,000

## Allowable Moment Diagram

