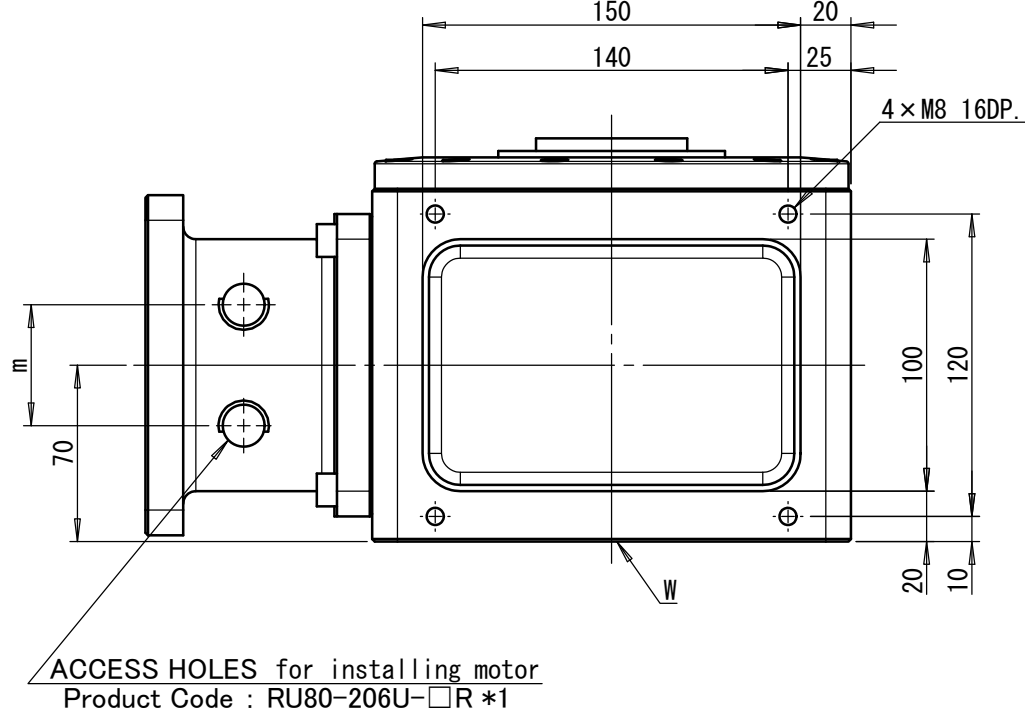
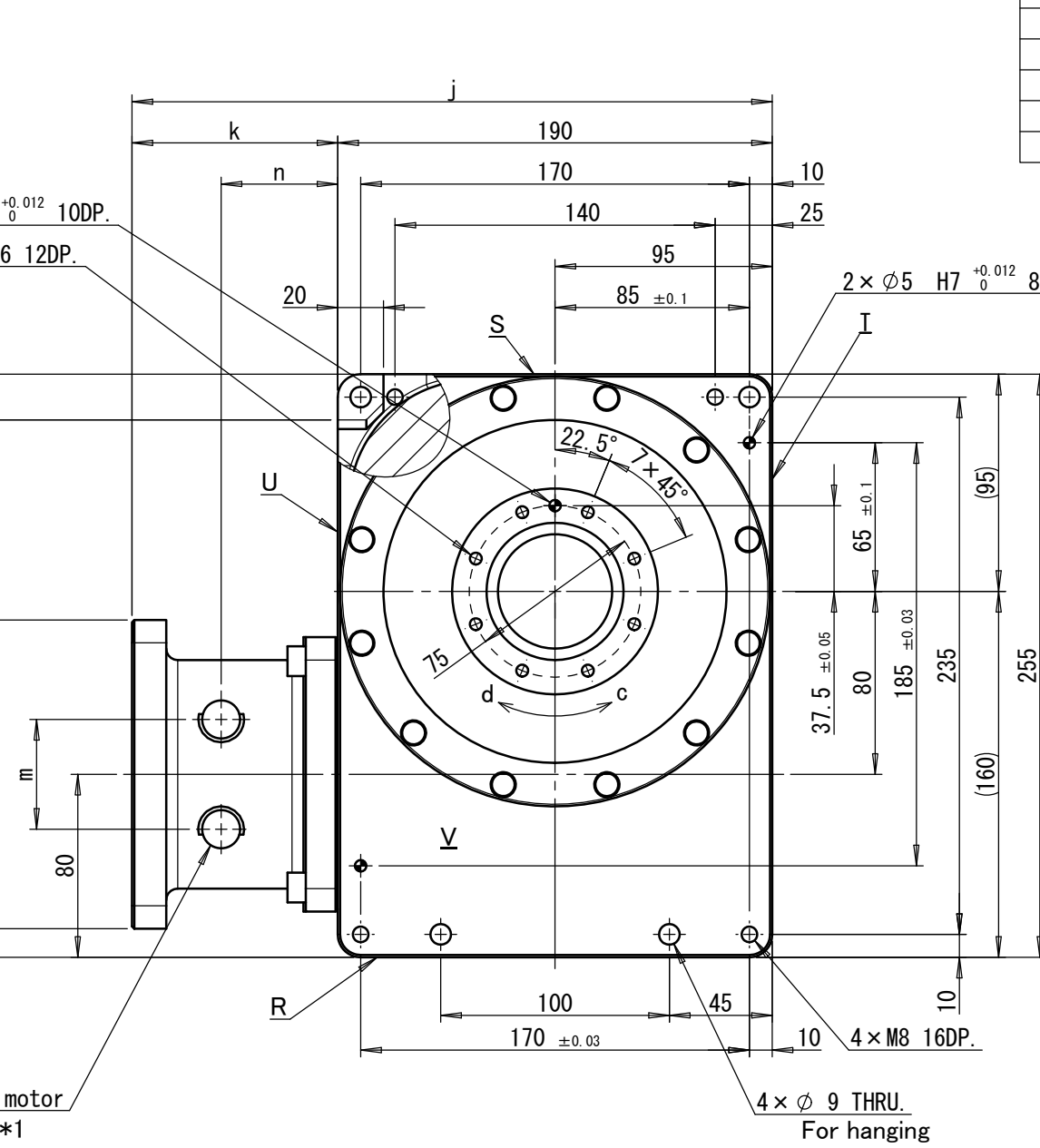
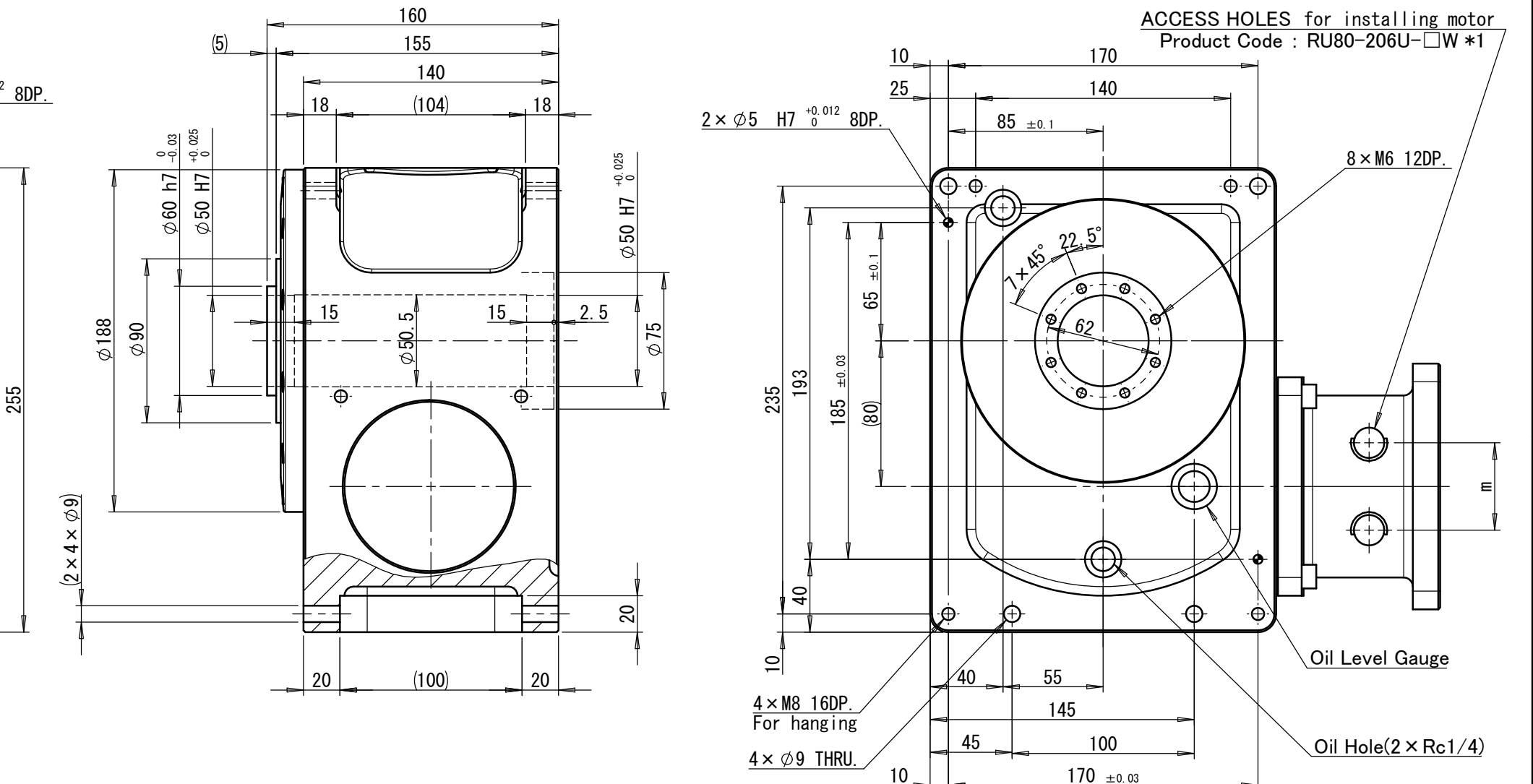


減速比 Reduction ratio	20	
静定格出力トルク Static output torque rating	360	N · m
動定格出力トルク Dynamic output torque rating	上図参照	N · m
最高出力回転数 Maximum output speed	150	min^{-1}
定格出力回転数 Nominal output speed	50	min^{-1}
位置決め精度 Positioning accuracy	40	arcsec以下
繰返し精度 Repeatability	±5	arcsec以下
出力軸アキシャル振れ(V面) Axial runout of output surface (V)	10	μm 以下
出力軸ラジアル振れ(V面) Radial runout of output outer diameter (V)	10	μm 以下
出力軸許容アキシャル荷重 Maximum axial load of output	16,500	N
出力軸許容ラジアル荷重 Maximum radial load of output	14,000	N
出力軸許容モーメント荷重 Maximum moment load of output	1,000	N · m
入出力軸回転方向 Direction of input-output shafts rotation	a-d, b-c	
製品概略質量 Weight	35	kg



- Notes.
- *1 モータ軸締結用アクセスホールは製品コードに該当する箇所に2箇所のみ加工
Only two access holes for assembling motor is specified by attachment code to be machined.
- *2 慣性モーメント(イナーシャ)はモータ軸換算値とする。(モータイナーシャは含まない)。
The moment of inertia is on motor shaft except for motor of inertia.
- *3 サーボモータは上表最大モーメント以下で使用のこと。
Do not operate the servo motor more than specified maximum motor torque which is on above table.

7		8			10				11				12				13	
Product Code		a	b	c	d	e	f	g	h	j	k	l	m	n	Inertia(kg·m ²)*2	Maximum Motor Torque (N·m)*3		
RU80-206U-AV	RU80-206U-AV-A	10	65	80	5	16.7	32~34	100	4×M6 9DP.	254.5	64.5	95	32	39.8	3.52×10 ⁻⁴	16.66		
RU80-206U-AW	RU80-206U-AW-A	10	65	80	5	16.7	32~34	100	4×M6 9DP.	254.5	64.5	95	32	39.8	3.52×10 ⁻⁴	16.66		
RU80-206U-AR	RU80-206U-AR-A	10	65	80	5	16.7	32~34	100	4×M6 9DP.	254.5	64.5	95	32	39.8	3.52×10 ⁻⁴	16.66		
RU80-206U-AS	RU80-206U-AS-A	10	65	80	5	16.7	32~34	100	4×M6 9DP.	254.5	64.5	95	32	39.8	3.52×10 ⁻⁴	16.66		
RU80-206U-BV	RU80-206U-BV-A	14	65	80	5	16.7	32~34	100	4×M6 9DP.	254.5	64.5	95	32	39.8	3.52×10 ⁻⁴	16.66		
RU80-206U-BW	RU80-206U-BW-A	14	65	80	5	16.7	32~34	100	4×M6 9DP.	254.5	64.5	95	32	39.8	3.52×10 ⁻⁴	16.66		
RU80-206U-BR	RU80-206U-BR-A	14	65	80	5	16.7	32~34	100	4×M6 9DP.	254.5	64.5	95	32	39.8	3.52×10 ⁻⁴	16.66		
RU80-206U-BS	RU80-206U-BS-A	14	65	80	5	16.7	32~34	100	4×M6 9DP.	254.5	64.5	95	32	39.8	3.52×10 ⁻⁴	16.66		
RU80-206U-CV	RU80-206U-CV-A	14	65	80	6	20.2	36.5~37.5	100	4×M6 13DP.	258	68	95	32	39.8	3.52×10 ⁻⁴	16.66		
RU80-206U-CW	RU80-206U-CW-A	14	65	80	6	20.2	36.5~37.5	100	4×M6 13DP.	258	68	95	32	39.8	3.52×10 ⁻⁴	16.66		
RU80-206U-CR	RU80-206U-CR-A	14	65	80	6	20.2	36.5~37.5	100	4×M6 13DP.	258	68	95	32	39.8	3.52×10 ⁻⁴	16.66		
RU80-206U-CS	RU80-206U-CS-A	14	65	80	6	20.2	36.5~37.5	100	4×M6 13DP.	258	68	95	32	39.8	3.52×10 ⁻⁴	16.66		
RU80-206U-DV	RU80-206U-DV-A	16	65	80	6	24.2	40~41.5	100	4×M6 17DP.	262	72	95	32	39.8	3.52×10 ⁻⁴	16.66		
RU80-206U-DW	RU80-206U-DW-A	16	65	80	6	24.2	40~41.5	100	4×M6 17DP.	262	72	95	32	39.8	3.52×10 ⁻⁴	16.66		
RU80-206U-DR	RU80-206U-DR-A	16	65	80	6	24.2	40~41.5	100	4×M6 17DP.	262	72	95	32	39.8	3.52×10 ⁻⁴	16.66		
RU80-206U-DS	RU80-206U-DS-A	16	65	80	6	24.2	40~41.5	100	4×M6 17DP.	262	72	95	32	39.8	3.52×10 ⁻⁴	16.66		
RU80-206U-EV	RU80-206U-EV-A	19	65	70	5	24.2	40~41.5	90	4×M6 12DP.	262	72	95	32	39.8	3.52×10 ⁻⁴	16.66		
RU80-206U-EW	RU80-206U-EW-A	19	65	70	5	24.2	40~41.5	90	4×M6 12DP.	262	72	95	32	39.8	3.52×10 ⁻⁴	16.66		
RU80-206U-ER	RU80-206U-ER-A	19	65	70	5	24.2	40~41.5	90	4×M6 12DP.	262	72	95	32	39.8	3.52×10 ⁻⁴	16.66		
RU80-206U-ES	RU80-206U-ES-A	19	65	70	5	24.2	40~41.5	90	4×M6 12DP.	262	72	95	32	39.8	3.52×10 ⁻⁴	16.66		
RU80-206U-FV	RU80-206U-FV-A	19	75	110	7	32.3	55~59.5	145	4×M8 15DP.	280	90	135	48	51	3.83×10 ⁻⁴	53.33		
RU80-206U-FW	RU80-206U-FW-A	19	75	110	7	32.3	55~59.5	145	4×M8 15DP.	280	90	135	48	51	3.83×10 ⁻⁴	53.33		
RU80-206U-FR	RU80-206U-FR-A	19	75	110	7	32.3	55~59.5	145	4×M8 15DP.	280	90	135	48	51	3.83×10 ⁻⁴	53.33		
RU80-206U-FS	RU80-206U-FS-A	19	75	110	7	32.3	55~59.5	145	4×M8 15DP.	280	90	135	48	51	3.83×10 ⁻⁴	53.33		



Product Code		Dimensions														Inertia (kg · m ²)*2	Maximum Motor Torque (N · m)*3
		a	b	c	d	e	f	g	h	j	k	l	m	n			
RU80-206U-GV	RU80-206U-GV-A	22	75	110	7	32.3	55~59.5	145	4×M8 15DP.	280	90	135	48	51	3.83×10 ⁻⁴	53.33	
RU80-206U-GW	RU80-206U-GW-A	22	75	110	7	32.3	55~59.5	145	4×M8 15DP.	280	90	135	48	51	3.83×10 ⁻⁴	53.33	
RU80-206U-GR	RU80-206U-GR-A	22	75	110	7	32.3	55~59.5	145	4×M8 15DP.	280	90	135	48	51	3.83×10 ⁻⁴	53.33	
RU80-206U-GS	RU80-206U-GS-A	22	75	110	7	32.3	55~59.5	145	4×M8 15DP.	280	90	135	48	51	3.83×10 ⁻⁴	53.33	
RU80-206U-HV	RU80-206U-HV-A	24	75	110	7	32.3	55~59.5	145	4×M8 15DP.	280	90	135	48	51	3.83×10 ⁻⁴	53.33	
RU80-206U-HW	RU80-206U-HW-A	24	75	110	7	32.3	55~59.5	145	4×M8 15DP.	280	90	135	48	51	3.83×10 ⁻⁴	53.33	
RU80-206U-HR	RU80-206U-HR-A	24	75	110	7	32.3	55~59.5	145	4×M8 15DP.	280	90	135	48	51	3.83×10 ⁻⁴	53.33	
RU80-206U-HS	RU80-206U-HS-A	24	75	110	7	32.3	55~59.5	145	4×M8 15DP.	280	90	135	48	51	3.83×10 ⁻⁴	53.33	
RU80-206U-JV	RU80-206U-JV-A	16	65	80	6	20.2	36.5~37.5	100	4×M6 13DP.	258	68	95	32	39.8	3.52×10 ⁻⁴	16.66	
RU80-206U-JW	RU80-206U-JW-A	16	65	80	6	20.2	36.5~37.5	100	4×M6 13DP.	258	68	95	32	39.8	3.52×10 ⁻⁴	16.66	
RU80-206U-JR	RU80-206U-JR-A	16	65	80	6	20.2	36.5~37.5	100	4×M6 13DP.	258	68	95	32	39.8	3.52×10 ⁻⁴	16.66	
RU80-206U-JS	RU80-206U-JS-A	16	65	80	6	20.2	36.5~37.5	100	4×M6 13DP.	258	68	95	32	39.8	3.52×10 ⁻⁴	16.66	
RU80-206U-KV	RU80-206U-KV-A	16	65	70	5	24.2	40~41.5	90	4×M6 12DP.	262	72	95	32	39.8	3.52×10 ⁻⁴	16.66	
RU80-206U-KW	RU80-206U-KW-A	16	65	70	5	24.2	40~41.5	90	4×M6 12DP.	262	72	95	32	39.8	3.52×10 ⁻⁴	16.66	
RU80-206U-KR	RU80-206U-KR-A	16	65	70	5	24.2	40~41.5	90	4×M6 12DP.	262	72	95	32	39.8	3.52×10 ⁻⁴	16.66	
RU80-206U-KS	RU80-206U-KS-A	16	65	70	5	24.2	40~41.5	90	4×M6 12DP.	262	72	95	32	39.8	3.52×10 ⁻⁴	16.66	

Scale	1:3	Date	08/Dec/2015
Designer	K. Katsumata	Checker	H. Takayama
Draftsman	K. Koike	Assent	K. Iida

3			
2			
1			
Correction		Sign	Date
Model	RollerDrive RU80-206U		CERTIFIED PRINT
Draw.No.	RU0801K3196-000		