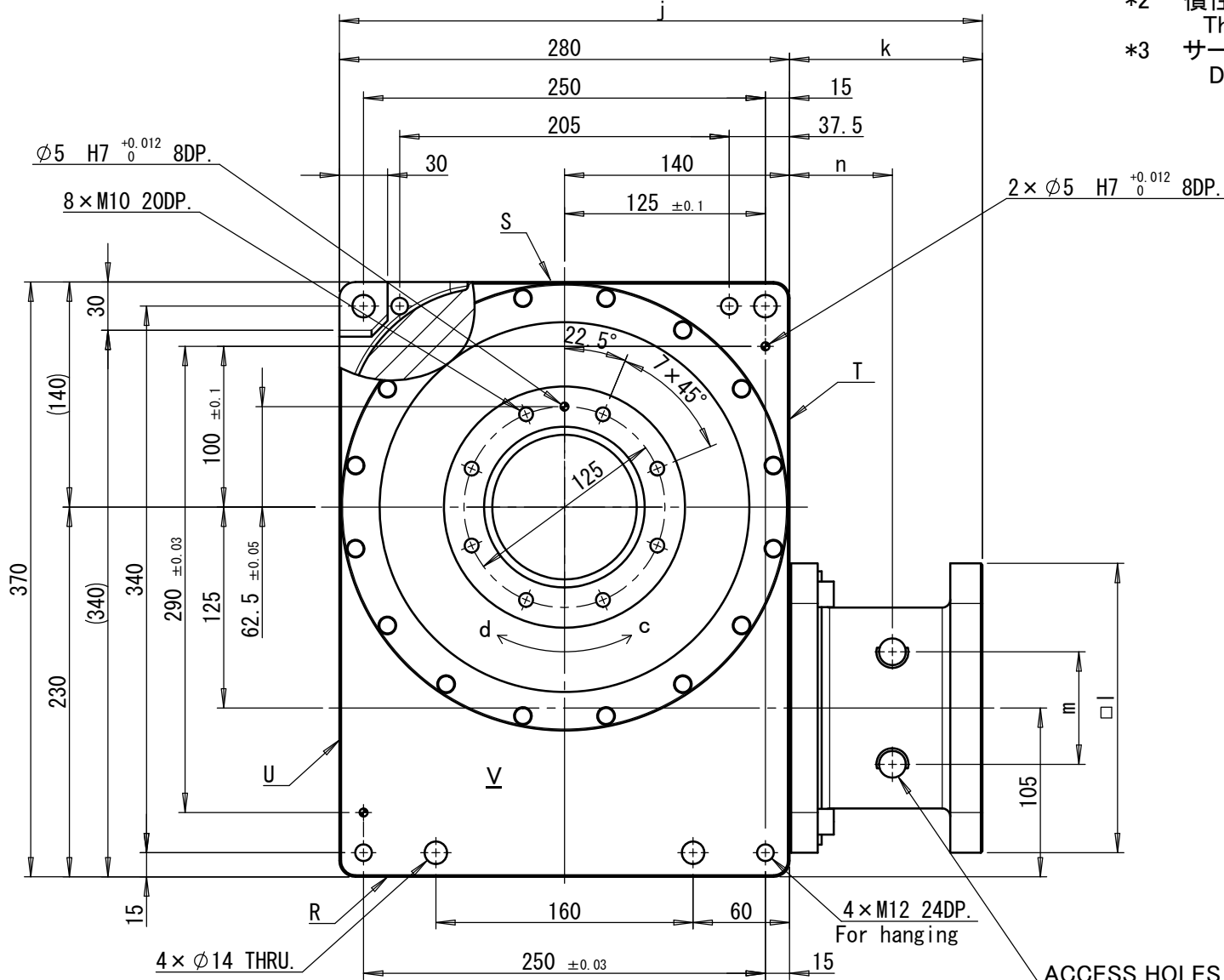
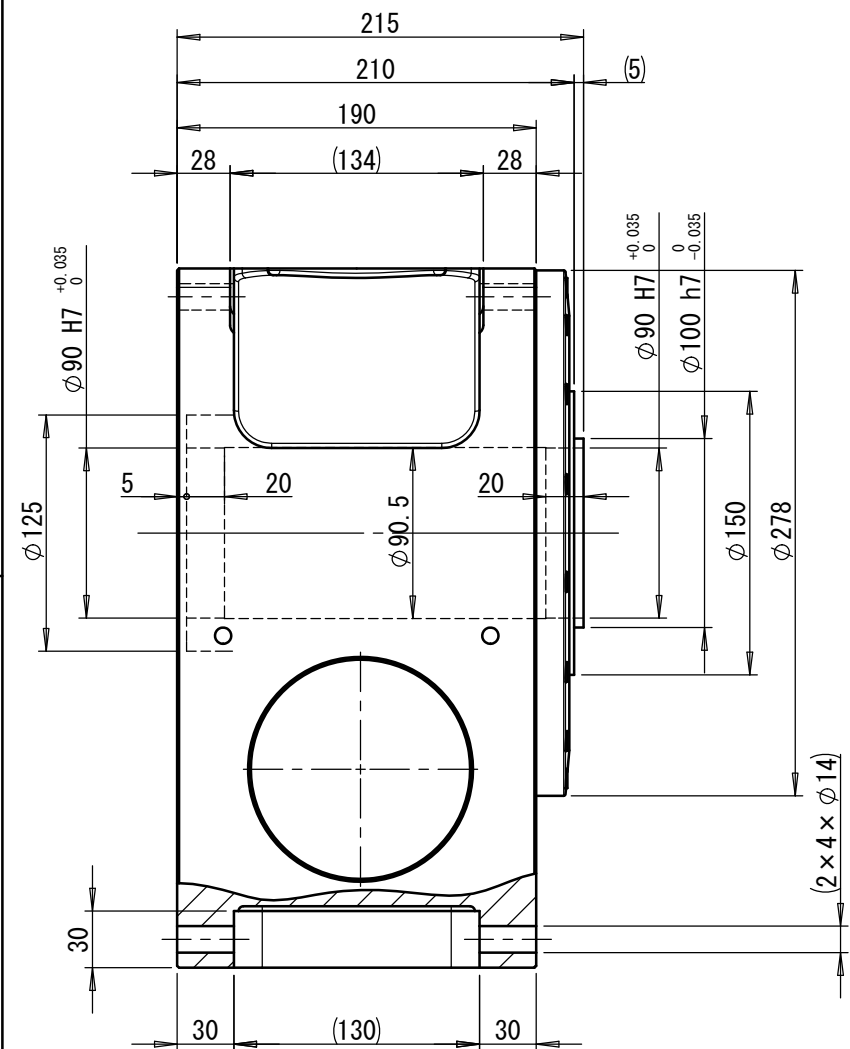
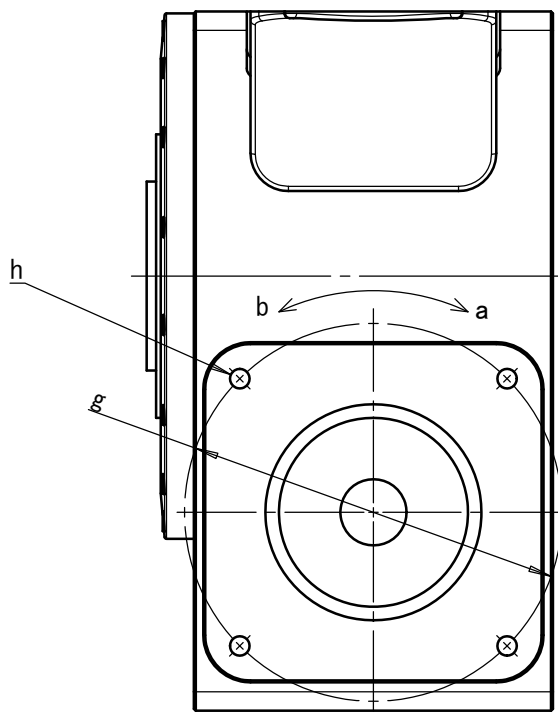


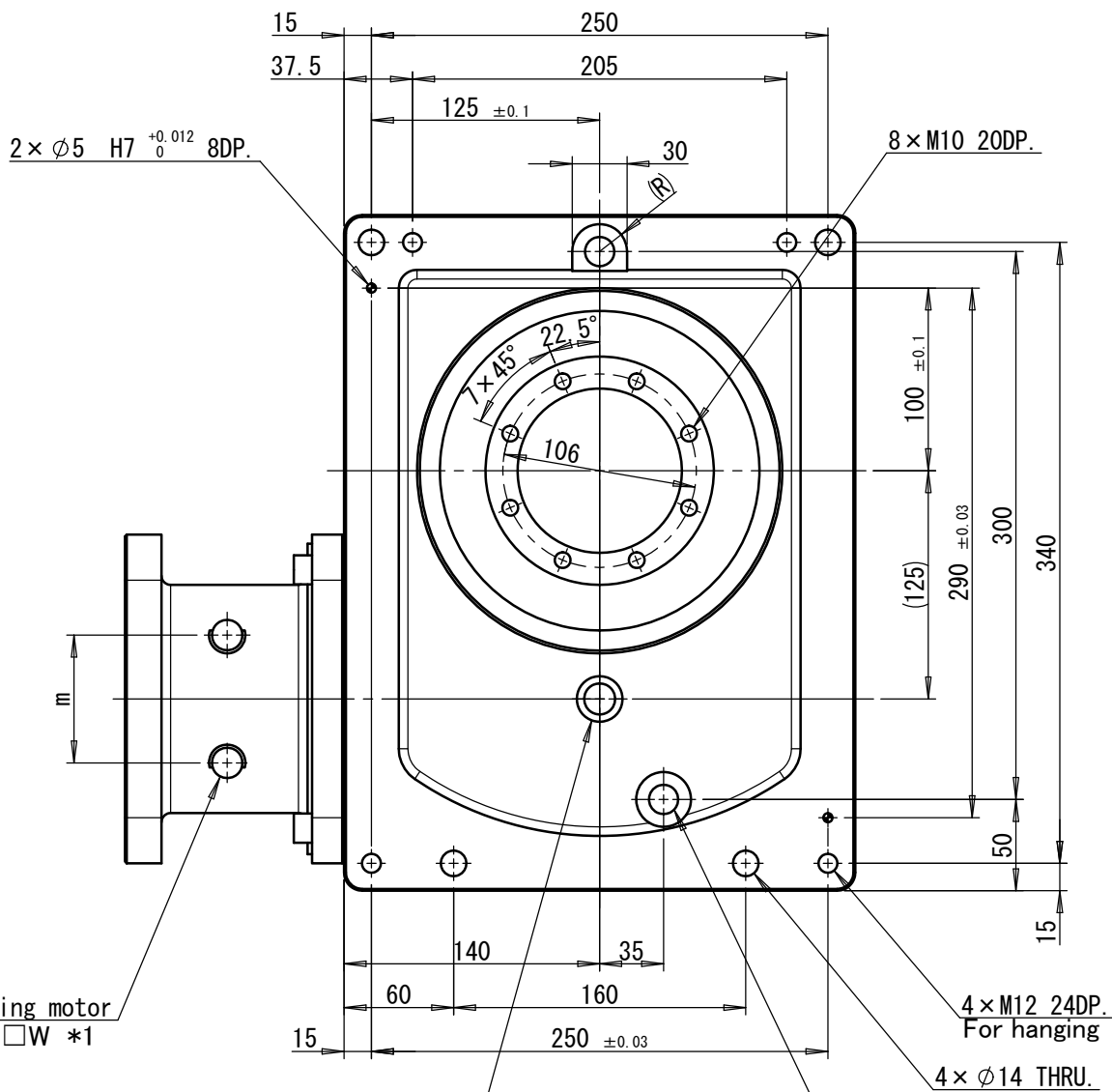
ACCESS HOLES for installing motor
Product Code : RU125-206T-□S *1



ACCESS HOLES for installing motor
Product Code : RU125-206T-□V *1



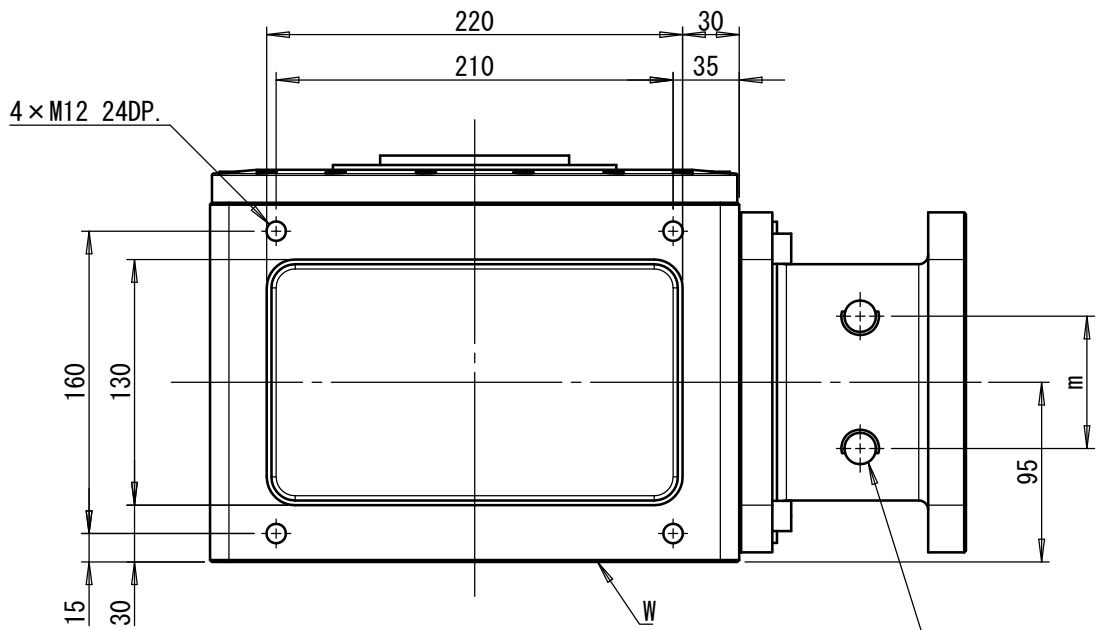
ACCESS HOLES for installing motor
Product Code : RU125-206T-□W *1



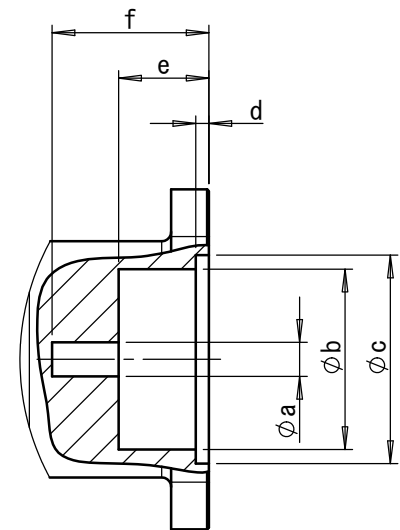
Oil Level Gauge

Oil Hole(2×Rc3/8)

減速比 Reduction ratio	20	
静定格出力トルク Static output torque rating	1,800	N・m
動定格出力トルク Dynamic output torque rating	上図参照	N・m
最高出力回転数 Maximum output speed	150	min ⁻¹
定格出力回転数 Nominal output speed	45	min ⁻¹
位置決め精度 Positioning accuracy	40	arcsec以下
繰返し精度 Repeatability	±5	arcsec以下
出力軸アキシャル振れ(V面) Axial runout of output surface (V)	10	μm以下
出力軸ラジアル振れ(V面) Radial runout of output outer diameter (V)	10	μm以下
出力軸許容アキシャル荷重 Maximum axial load of output	50,000	N
出力軸許容ラジアル荷重 Maximum radial load of output	35,000	N
出力軸許容モーメント荷重 Maximum moment load of output	5,000	N・m
入出力軸回転方向 Direction of input-output shafts rotation	a-d, b-c	
製品概略質量 Weight	95	kg


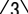



ACCESS HOLES for installing motor
Product Code : RU125-206T-□R *1



モータ取付部詳細図
Detail of the motor attachment

Scale	1:4	Date	27/Nov/2015
Designer	K. Katsumata	Checker	H. Takayama
Draftsman	K. Koike	Assent	K. Iida

			
			
			
Correction		Sign	Date
Model	<i>RollerDrive</i> RU125-206T		CERTIFIED PRINT
Draw.No. RU1251K3238-000			